

Semaine / Week 11 2009

I. SITUATION EPIDEMIOLOGIQUE DE LA SEMAINE 11 (09 au 15 mars 2009) 2009
EPIDEMIOLOGICAL SITUATION OF WEEK 11 (9 to 15 March 2009) 2009

Tableau/ Table 1 : Situation épidémiologique de la semaine 11 (09 au 15 mars 2009)
Epidemiological Situation week 11 (9 to 15 March 2009)

Pays	Cas	Décès	Létalité (%)	District en Alerte	District en Epidémie	Complét. (%)	NmA	NmW135	Autres Nm	Pneum	Hib
Country	Case	Death	Lortality	District in Alert	District in Epidemic	Complet (%)	NmA	NmW135	Other Nm	Pneum	Hib
Benin	13	0	0.0	0	0	98.7	0	0	0	0	0
Burkina Faso	264	39	14.8	4	0	100.0	-	-	-	-	-
Cameroun	-	-	-	-	-	-	-	-	-	-	-
Centrafrique	-	-	-	-	-	-	-	-	-	-	-
Cote d'Ivoire	6	3	50.0	0	0	7.1	-	-	-	-	-
Ethiopia	-	-	-	-	-	-	-	-	-	-	-
Ghana	-	-	-	-	-	-	-	-	-	-	-
Guinée	-	-	-	-	-	-	-	-	-	-	-
Mali	21	1	4.8	0	0	100.0	-	-	-	-	-
Niger	1 071	30	2.8	10	10	95.2	82	0	0	0	0
Nigeria	4 164	171	4.1	30	66	70.7	-	-	-	-	-
RD Congo**	-	-	-	-	-	-	-	-	-	-	-
Tchad	0	0	0.0	0	0	100.0	-	-	-	-	-
Togo	11	1	9.1	0	0	100.0	-	-	-	-	-
Total	5 550	245	4.4	44	76	60.0	82	0	0	0	0

* Identification par / identification by: PCR, LATEX, CULTURE

** Définition des seuils d'alerte/épidémique non applicable à ce pays situé en dehors de la ceinture de la méningite
Definition of alert/epidemic thresholds not applicable to this country outside the meningitis belt

Commentaires:

Burkina Faso :

- District en alerte : Kougoussi, Pama, Titao et Ziniaré.

Niger :

- District en épidémie: Agadez, Tessaoua, Keita, Goure, Magaria, Matameye, Mirriah, Tanout Madarounfa, et Zinder
- District en alerte: Arlit, Bilma, Dogondoutchi, Dosso, Gaya, Loga, Guidan-Roundji, Maradi, Illela, et Tahoua.

Nigeria : 66 LGAs en épidémie et 30 LGAs en alerte
(Voir les détails à la page 3 et 4).

Comments:

Burkina Faso:

- District in alert: Kougoussi, Pama, Titao and Ziniaré.

Niger:

- District in epidemic : Agadez, Tessaoua, Keita, Goure, Magaria, Matameye, Mirriah, Tanout Madarounfa, et Zinder
- District in alert: Arlit, Bilma, Dogondoutchi, Dosso, Gaya, Loga, Guidan-Roundji, Maradi, Illela, and Tahoua.

Nigeria: 66 LGAs in epidemic and 30 LGAs in alert
(See details on page 3 and 4)

Nous contacter / Contact us:

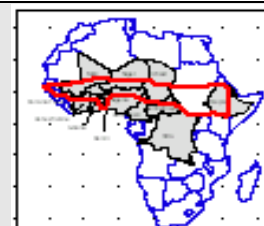
Multi Disease Surveillance Centre / Centre de Surveillance pluri pathologique
01 BP 549 Ouagadougou 01, Burkina Faso
Tel: (226) 50-34-29-53, Fax: (226) 50-34-29-53

E.mail: mdsc@oncho.afro.who.int / Site web/Web site: www.who.int/csr;
<http://www.meningvax.org/press-reports.htm>

Nota bene: Les données publiées dans ce bulletin sont des informations hebdomadaires. Elles sont susceptibles d'évoluer après complétude et vérification.
The data published in this bulletin are weekly informations. They are susceptible to change after completeness and vérification.

Pays sous Surveillance Renforcée de la Méningite dans la Région Africaine de l'OMS

Countries under Enhanced Surveillance of Meningitis in the WHO African Region



II. SYNTHÈSE DE LA SITUATION ÉPIDÉMIOLOGIQUE 2009 (SEMAINES NOTIFIÉES 01 – 11)
 SYNTHESIS OF THE EPIDEMIOLOGICAL SITUATION 2009 (REPORTED WEEKS 1 – 11)

Tableau/ Table 2: Synthèse de la situation épidémiologique (semaines notifiées)/
 Synthesis of the epidemiological situation (reported weeks)

Pays	Cas	Décès	Létalité (%)	District en Alerte	District en Epidémie	Semaines notifiées	En districts (%)	En semaines (%)
Country	Case	Death	Letality (%)	District in Alert	District in Epidemic	Reported weeks	In districts (%)	In weeks
Benin	151	21	13.9	1	0	01-11	98.7	99.9
Burkina Faso	2 231	314	14.1	9	3	01-11	100.0	100.0
Cameroun	-	-	-	-	-	-	-	-
Centrafrique	41	17	41.5	2	0	01-11	100.0	100
Côte d'Ivoire	141	30	21.3	0	0	01-11	90.0	90.0
Ethiopia	32	6	18.8	0	0	01-07	-	-
Ghana	119	20	16.8	0	0	01-10	-	-
Guinée	-	-	-	-	-	-	-	-
Mali	107	11	10.3	0	0	01-11	100.0	100.0
Niger	4 513	169	3.7	6	15	01-11	100.0	99.6
Nigeria	17 462	950	5.4	44	112	01-11	70.8	99.9
RD Congo**	1 221	132	10.8	23	2	01-10	-	-
Tchad	398	52	13.1	2	1	01-11	100.0	97.8
Togo	130	18	13.8	1	0	01-11	100.0	99.5
Total	26 546	1740	6.6	88	133	01-11	65.0	99.7

** Définition des seuils d'alerte/épidémique non applicable à ce pays situé en dehors de la ceinture de la méningite
 Definition of Alert/epidemic thresholds not applicable to this country outside the meningitis belt

Commentaires:

Le Nigeria avec 112 LGAs et le Niger avec 15 districts continuent à être les deux pays les plus touchés par l'épidémie de méningite. La situation épidémique dans ces 2 pays est de loin plus grave que celle de l'année précédente. Néanmoins la létalité reste faible. Le Burkina Faso avec 3 districts ayant franchis le seuil épidémique et 9 en alerte reste calme comparé aux 3 années antérieures.

Comments:

Nigeria with 112 LGAs and Niger with 15 districts are still the most severely hit countries by the epidemic meningitis. This year, the epidemiological situation in the 2 countries is worst compared to last year 2008. However the case fatality rates remain low. Burkina Faso with 3 districts having been in epidemic threshold and 9 in alert threshold remain calm this year compared to the previous 3 years.

**Tableau/Table 3: Pathogènes identifiés par PCR, Latex, Culture (semaines notifiées 2009)/
 Pathogens identified by PCR, Latex, Culture (reported weeks 2009)**

Pays	Nombre LCR	LCR contam	LCR négatif	NmA	NmW135	Autres Nm	S.Pneum	Hib	Autres Patho
Country	Number LCR	LCR contam	LCR négatif	NmA	NmW135	Other Nm	S.Pneum	Hib	Other Patho
Benin	110	0	48	0	2	0	45	0	15
Burkina Faso	135	0	73	18	1	0	43	0	0
Cameroun	-	-	-	-	-	-	-	-	-
Centrafrique	-	-	-	-	-	-	-	-	-
Cote d'Ivoire	21	0	18	0	0	0	2	1	0
Ethiopia	-	-	-	-	-	-	-	-	-
Ghana	11	0	0	1	1	0	8	1	0
Mali	-	-	-	-	-	-	-	-	-
Niger	1 190	0	615	514	1	2	43	6	9
Nigeria	105	0	42	53	7	0	2	0	1
RD Congo	-	-	-	-	-	-	-	-	-
Tchad	-	-	-	-	-	-	-	-	-
Togo	-	-	-	-	-	-	-	-	-
Total	1 572	0	796	586	12	2	143	8	25

Pathogen Identification par /Pathogen identification by: PCR, LATEX, CULTURE

Commentaires:

Les résultats de laboratoire au Nigeria et au Niger, les 2 pays en épidémie, ont mis en évidence principalement le *Neisseria meningitidis* A. Au Burkina Faso par contre c'est surtout le *Streptococcus pneumoniae* qui prédomine, due certainement aux 3 années successives de campagnes de vaccination de masse avec le vaccin anti-méningococcique AC.

Comments:

The laboratory results in Nigeria and Niger, the 2 epidemic countries have mainly evidenced the *Neisseria meningitidis* A. In Burkina Faso however, the most prevailing germ is *Streptococcus pneumoniae*, due likely to the mass immunization campaigns conducted the previous 3 years with the bivalent AC meningococcal vaccine.

Situation Épidémiologique de la méningite du Nigeria 2009/ (1/2)
Meningitis epidemiological situation 2009

SN	State	LGA	Population	Wk 01 Attack Rate	Wk 02 Attack Rate	Wk 03 Attack Rate	Wk 04 Attack Rate	Wk 05 Attack Rate	Wk 06 Attack Rate	Wk 07 Attack Rate	Wk 08 Attack Rate	Wk 09 Attack Rate	Wk 10 Attack Rate	Wk 11 Attack Rate
1	Adamawa	Guyuk	193,705									10.32		
2	Adamawa	Lamurde	122,904							4.07	4.88	20.34	5.70	
3	Adamawa	Madagali	146,900		0.68	0.68				10.21	2.72	6.13		
4	Adamawa	Michika	169,209	0.59	1.18	2.95	1.77	6.50		4.14	1.77	12.41	0.59	
5	Adamawa	Shelleng	162,418							1.23	5.54	6.77	14.16	41.25
6	Bauchi	Alkaleri	364,181									6.32	5.77	0.82
7	Bauchi	Bauchi	545,911			0.37		0.55	0.18	0.18	7.69	6.59	3.85	7.33
8	Bauchi	Bogoro	93,100								2.15	8.59	17.19	65.52
9	Bauchi	Damban	166,845	1.20	2.40	4.20	9.59	7.19	17.98	28.77	49.75	23.37	50.95	23.37
10	Bauchi	Darazo	278,142					0.36	0.36	8.99	3.60	6.83	12.58	10.07
11	Bauchi	Dass	99,433						1.01				4.02	13.07
12	Bauchi	Gamawa	316,604					0.95	0.63	2.53	3.47	4.11	4.42	8.84
13	Bauchi	Ganjuwa	310,059			0.32					1.94		11.61	13.22
14	Bauchi	Giade	173,530	0.58						1.15	19.59	7.49	24.20	40.92
15	Bauchi	Itas-Gadua	254,262				2.75	1.57		1.97	11.41	17.30	17.30	46.41
16	Bauchi	Jama'Are	130,321							6.91	15.35	16.88	16.88	33.76
17	Bauchi	Katagum	327,197						4.89	6.11	22.62	12.23	24.45	38.51
18	Bauchi	Ningi	428,044		1.64							0.93	4.91	6.07
19	Bauchi	Shira	258,704					1.55		6.57	9.28	8.89	15.08	14.30
20	Bauchi	T/Balewa	243,198										4.93	6.99
21	Bauchi	Warji	126,824							5.52	3.94		3.94	14.98
22	Bauchi	Zaki	211,657					0.94	3.31		5.20	3.31	7.09	20.32
23	Borno	A/Uba	152,661								1.31	1.97		5.90
24	Borno	Bayo	87,311		5.73	5.73	16.03	8.02	10.31	18.33	18.33	35.51		37.80
25	Borno	Biu	194,649				1.54	1.03	3.60	4.11	8.22	13.36		4.62
26	Borno	Hawul	133,008								3.01	9.02	3.01	2.26
27	Borno	Kw/ Kusar	62,461								1.60	17.61		97.66
28	Borno	Shani	113,112						13.26	18.57	3.54	7.96		0.88
29	Gombe	Akko	371,336							1.62	4.58	7.81	16.43	16.70
30	Gombe	Balanga	233,614							4.28	4.28	23.54	3.85	21.83
31	Gombe	Billiri	222,177								3.60	9.90	9.90	13.05
32	Gombe	Dukku	227,724			0.88			2.63	2.20	23.27	16.25	13.61	45.23
33	Gombe	Funakaye	259,484			0.39	2.31	5.40	16.57	12.72	25.05	46.25	48.56	38.54
34	Gombe	Gombe	294,560		1.02	0.68	0.68	0.34	4.75	5.77	15.62	20.37	25.80	26.82
35	Gombe	Kaltungo	164,651		1.21					1.82	3.64	15.79	31.58	52.84
36	Gombe	Kwami	214,653							0.93	3.26	3.73	2.33	9.78
37	Gombe	Nafada	151,880					4.61	5.27	9.22	5.93	13.83	12.51	23.04
38	Gombe	Shongom	166,536				0.60	0.60		1.20	5.40	9.61	1.20	6.61
39	Gombe	Yamaltu Deba	280,544						0.71	4.63	12.12	37.78	44.56	50.62
40	Jigawa	Auyo	143,821					6.26	2.09	10.43	0.70	20.86	9.04	8.34
41	Jigawa	Babura	226,736		0.88	1.32		8.82	2.65	4.41	3.09	3.53	8.82	
42	Jigawa	Birnin-Kudu	341,435	0.29	1.76	2.05	2.64	3.22	7.32	10.54	27.53	41.30		
43	Jigawa	Birniwa	155,074							3.22	0.64	7.09		35.47
44	Jigawa	Buji	106,090				4.71	4.71	4.71	4.71	9.43	18.85	23.56	34.88
45	Jigawa	Dutse	268,184	1.12	0.37	0.75	0.75	1.49	2.24		8.95	2.98	14.92	14.92
46	Jigawa	Gagarawa	87,593			12.56			28.54		43.38		15.98	
47	Jigawa	Garki	165,865				0.60		3.62		0.60		17.48	
48	Jigawa	Gumel	116,757			1.71	6.85	22.27			47.96		20.56	
49	Jigawa	Guri	125,318				0.80					7.18	9.58	11.97
50	Jigawa	Gwaram	296,991					0.67			4.71	9.09	11.45	23.57
51	Jigawa	Gwiwa	135,667									2.21	6.63	9.58
52	Jigawa	Hadejia	115,087			0.87	1.74		1.74	31.28		18.25	36.49	20.85
53	Jigawa	Jahun	249,609			1.60			2.40		18.03	15.22	4.81	7.21
54	Jigawa	Kafin Hausa	295,331	1.69	1.69			9.14	43.34	40.29	62.64	3.39		2.37
55	Jigawa	Kaugama	139,414					0.72	4.30	10.76	17.93	5.74	45.19	43.04

Situation Épidémiologique de la méningite du Nigeria 2009/ (2/2)

Meningitis epidemiological situation 2009

Nigeria CSM Surveillance: Weekly Attack Rates by LGAs, 2009 (... 2/3)

SN	State	LGA	Population	Wk 01	Wk 02	Wk 03	Wk 04	Wk 05	Wk 06	Wk 07	Wk 08	Wk 09	Wk 10	Wk 11
				Attack Rate	Attack Rate	Attack Rate	Attack Rate	Attack Rate	Attack Rate	Attack Rate	Attack Rate	Attack Rate	Attack Rate	Attack Rate
56	Jigawa	Kazaure	175,955				1.70	1.70	6.25	6.25		8.52	10.80	8.52
57	Jigawa	Kiri-Kessamma	208,673					0.49		0.96	6.71	6.71	9.58	
58	Jigawa	Kiyawa	188,397	1.59	0.53	1.06	1.06	5.31	19.27	11.15	14.39	26.19	29.19	35.58
59	Jigawa	Maigatani	195,808		0.51	4.60	5.62	2.04	10.21	4.09	6.13	8.17	7.15	
60	Jigawa	Malam-Maduri	175,867				1.14	1.71	11.94	11.94	17.06	14.78	17.51	
61	Jigawa	Miga	139,924			1.43		16.44	8.58	6.58	7.86	18.58	37.16	38.45
62	Jigawa	Ringim	209,219					0.96	0.48	7.65	16.73	28.68	31.55	
63	Jigawa	Roni	84,787						7.08		16.51	16.51	11.79	
64	Jigawa	Sule-Tankarkar	142,566					13.33	7.72	14.73			47.00	
65	Jigawa	Taura	143,555						2.09	27.88			66.18	
66	Jigawa	Yankwashi	104,334						10.54	4.79	4.79			
67	Kaduna	Ikara	211,908		3.30	8.97	8.49	6.13	5.19	15.57	11.26	6.81	4.72	
68	Kaduna	Lere	361,889							0.28	2.76		5.25	
69	Kaduna	Makarfi	159,821						22.53	1.88	6.26	13.14		
70	Kano	Ajingi	191,952				1.04		0.52	3.13	6.77	5.21		
71	Kano	Bagwai	179,507	5.01	3.34	4.46	5.57	8.36	10.14	16.16	31.75	21.73	11.14	12.26
72	Kano	Bebeji	208,180		4.32	0.96	5.28	2.40	3.36	1.92	4.80	8.17	10.57	
73	Kano	Bichi	305,447			0.33	3.93	2.62	9.82	21.61	19.89	10.15	22.26	
74	Kano	DKKudu	248,447						2.82	5.23	6.44	6.44	1.21	
75	Kano	D/LIota	273,233							0.73	1.83	5.12	0.37	
76	Kano	Dambatta	229,244					1.74	2.18	11.78	17.88	22.25	12.21	
77	Kano	Dogwa	166,647							1.80	2.40	2.40	19.20	
78	Kano	G/Mallam	120,412						2.34		10.96			
79	Kano	Gezawa	310,925				1.61	0.32	0.64		1.93	1.93	5.47	
80	Kano	Gwarzo	202,809		3.94		2.47	2.96	10.85	13.31	4.93			
81	Kano	Kabo	169,585				0.59		5.90	7.08	2.95	7.87	4.72	
82	Kano	Karaye	155,873		1.28	1.28			7.70	14.11	7.06			
83	Kano	Kibiyi	150,724						1.99	37.15	38.81	3.98		
84	Kano	Kiru	291,889	0.34	0.34	3.08	7.54	3.77	1.03	3.77			0.89	
85	Kano	Kumbotso	326,259						0.31	0.92	0.92	6.44	1.53	
86	Kano	Kunchi	122,375				0.82		7.35	7.35	17.18	10.82	8.17	
87	Kano	Kura	159,394			2.51			3.14	6.90	0.63			
88	Kano	Madobi	150,600		1.33		0.68	2.88	2.88	3.32		3.98	5.31	
89	Kano	Makoda	245,151						5.71	11.01	17.95	15.08		
90	Kano	Minjibir	235,686	0.85	0.85			1.70	0.85		3.34	13.15	1.70	
91	Kano	Shanono	154,992						2.58	0.85	5.81	0.65		
92	Kano	TAWada	255,450						0.78	3.91	3.13	6.85	5.87	
93	Kano	Tofa	107,732	7.43	7.43	5.57	3.71	12.07	31.56	21.35	27.65	6.50		
94	Kano	Tsanyawa	173,811			2.30		1.15	2.30	13.23	9.78	6.80		
95	Kano	Warawa	141,962					0.70	4.93	9.16		1.41	3.52	
96	Kano	Wudil	204,134			0.49	0.49	2.94	6.37	6.37		3.43	7.35	
97	Katsina	Bakori	163,222				3.06	3.06	1.23	39.63				
98	Katsina	Batagarawa	201,690		0.50		0.50	0.99	1.98	11.40	18.04	29.80	19.83	
99	Katsina	Batsari	228,356					6.13	2.19	3.07	31.53	8.76	7.44	
100	Katsina	Baure	215,732						2.78	6.49				
101	Katsina	Bindawa	166,484				1.80		9.81	51.88	25.63	26.43	39.14	
102	Katsina	Dandume	159,253					1.26		4.40	9.43	11.30		
103	Katsina	Danja	137,359					10.92	13.10	26.21	64.79	68.43	90.27	129.59
104	Katsina	Damusa	124,233		3.22			8.06	16.36	2.41	1.61	8.36	11.24	19.42
105	Katsina	Daura	240,095			2.08		0.83	2.08		2.92	1.67	9.58	
106	Katsina	Dutsi	131,152			1.52		1.52			0.76	9.91	9.15	
107	Katsina	Dutsinma	185,404				1.08		1.08	3.24	4.85	16.22	31.26	
108	Katsina	Faskari	214,213					1.87	3.73	0.93	4.20	12.14	10.74	
109	Katsina	Funtua	246,488					2.84			6.08	1.22	11.77	
110	Katsina	Ingawa	185,494							11.88	16.17	29.18	19.47	

■ LGAs in Alert: (5.00 ≤ AR < 10.00)

■ LGAs in Epidemic: (AR ≥ 10.00)

SN	State	LGA	Population	Wk 01	Wk 02	Wk 03	Wk 04	Wk 05	Wk 06	Wk 07	Wk 08	Wk 09	Wk 10	Wk 11	
				Attack Rate	Attack Rate	Attack Rate	Attack Rate	Attack Rate	Attack Rate	Attack Rate	Attack Rate	Attack Rate	Attack Rate	Attack Rate	
111	Katsina	Jibya	185,488							14.56	5.93	17.79			
112	Katsina	Kafur	221,697				0.45	5.86	7.22	4.96	0.45	8.57	16.89	7.67	9.47
113	Katsina	Kaita	201,500				1.99			4.47	11.41	48.64	39.21	36.72	
114	Katsina	Kankara	268,526		0.37						5.21	2.23	14.52	41.34	13.78
115	Katsina	Kankia	165,476	0.80		0.60	1.81	3.63	5.44	30.22	9.67	22.96	12.69	54.98	
116	Katsina	Katsina	347,989					2.01	2.30	0.86	7.78	4.60	12.93	11.21	
117	Katsina	Kurfi	128,484		5.45	2.33	10.12	3.89	19.48	35.80		21.79			
118	Katsina	Kusada	108,472					11.98	17.52	8.30	3.69	18.44		9.22	
119	Katsina	Malunfashi	199,882	1.50				7.50	13.01	18.01	29.02	23.01		53.03	
120	Katsina	Mani	193,376							7.24	3.10	2.07			
121	Katsina	Mashi	189,188			2.09	27.88					1.59		7.93	
122	Katsina	Matazu	126,019				1.59	6.35		5.55	12.70	15.87	3.97	24.60	
123	Katsina	Musawa	187,637				3.20	4.80	1.60	21.32	18.65	51.16		27.18	
124	Katsina	Rimi	168,000						4.76	8.33	8.33	4.76	8.33	33.83	
125	Katsina	Sabawa	148,666										0.67	16.14	
126	Katsina	Safana	200,820				2.99	2.99	1.49		1.00	1.49	1.99	5.98	
127	Katsina	Sandamu	150,017	1.33	2.67	7.33	10.00	16.66				35.33	22.66		
128	Katsina	Zango	169,092								9.46	20.11		24.84	
129	Kebbi	Aliero	72,301								4.15	11.06			
130	Kebbi	Bunza	133,111							4.51		12.77	11.27		
131	Nasarawa	N/Eggon	162,957								6.14	0.61			
132	Plateau	Bokkos	193,303	0.52				0.52	0.52	0.52	5.17				
133	Plateau	Langtang North	152,345											14.44	
134	Sokoto	Binji	114,766								6.97	1.74		1.74	
135	Sokoto	Gwadabawa	252,811						9.10	14.64	7.52	30.46	4.75	5.54	
136	Sokoto	Illela	164,443								24.93	6.89	14.59	4.26	
137	Sokoto	Isa	159,851								36.96		3.76		
138	Sokoto	Tambuwal	245,788								5.70	3.25		6.10	
139	Taraba	K/Lamido	213,381							0.47	7.50	7.97	3.75		
140	Yobe	Bursari	120,988								16.53	4.13	8.27	2.48	
141	Yobe	Damaturu	97,583						1.02	8.20	8.20	18.45	12.30	14.35	
142	Yobe	Fika	151,778						6.59	9.88	5.93	2.64	1.98	1.98	
143	Yobe	Fune	333,458						5.40	0.60	2.40	0.90		6.00	
144	Yobe	Gujba	144,231					2.08	9.71	15.25	15.25	22.68	15.25		
145	Yobe	Gulani	114,763						15.68	42.70	6.97	18.30	8.71	6.10	
146	Yobe	Karasuwa	118,624											20.23	
147	Yobe	Machina	68,304						1.46	1.46	5.86	23.42	7.32	5.86	
148	Yobe	Nangere	97,371					5.14	1.03	3.08	3.08	14.38			
149	Yobe	Potiskum	228,258							6.13	6.57	11.83	4.38	2.63	
150	Zamfara	Anka	156,381								16.23	1.28			
151	Zamfara	Bukkuyum	232,607				0.43	1.72	1.29	2.58	1.29	9.03	0.86	0.43	
152	Zamfara	Bungudu	283,478				1.41	3.53	3.53	7.06	7.06	7.06	3.53	3.53	
153	Zamfara	Maradun	231,748											6.47	
154	Zamfara	Maru	320,829	0.94				3.12		3.12	6.23	5.92	3.12	6.23	
155	Zamfara	Shinkafi	149,092	0.67	1.34					7.38	11.40			6.71	
156	Zamfara	Talata Mafara	236,503										5.07	0.42	

III. REPRESENTATION GRAPHIQUE DES DONNEES/ GRAPHICAL REPRESENTATION OF DATA

Figure 1: Cartographie des taux d'attaque de la Méningite par district par pays de la semaine 11, 2009
Map of meningitis attack rates by district by country at week 11, 2009

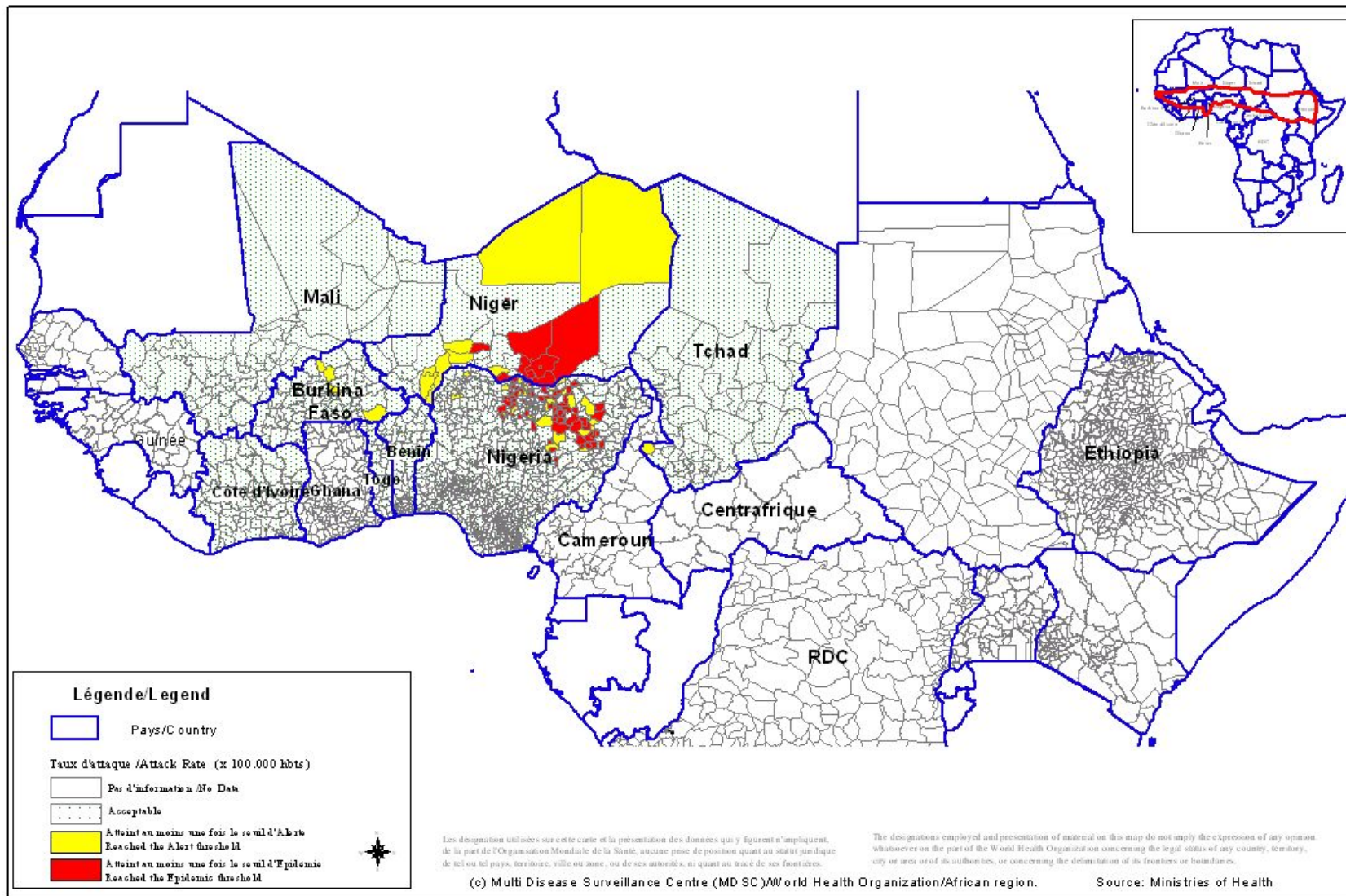


Figure 2 : Cartographie récapitulative des taux d'attaque cumulés de la Méningite, Semaine 01 – 11, 2009
 (Représentation basée sur les taux d'attaque hebdomadaires les plus élevés par district au cours de l'année)
Recapitulative map of cumulative Meningitis attack rates at week 1- 11, 2009
 (Mapping based on weekly highest attack rates by district during the year)

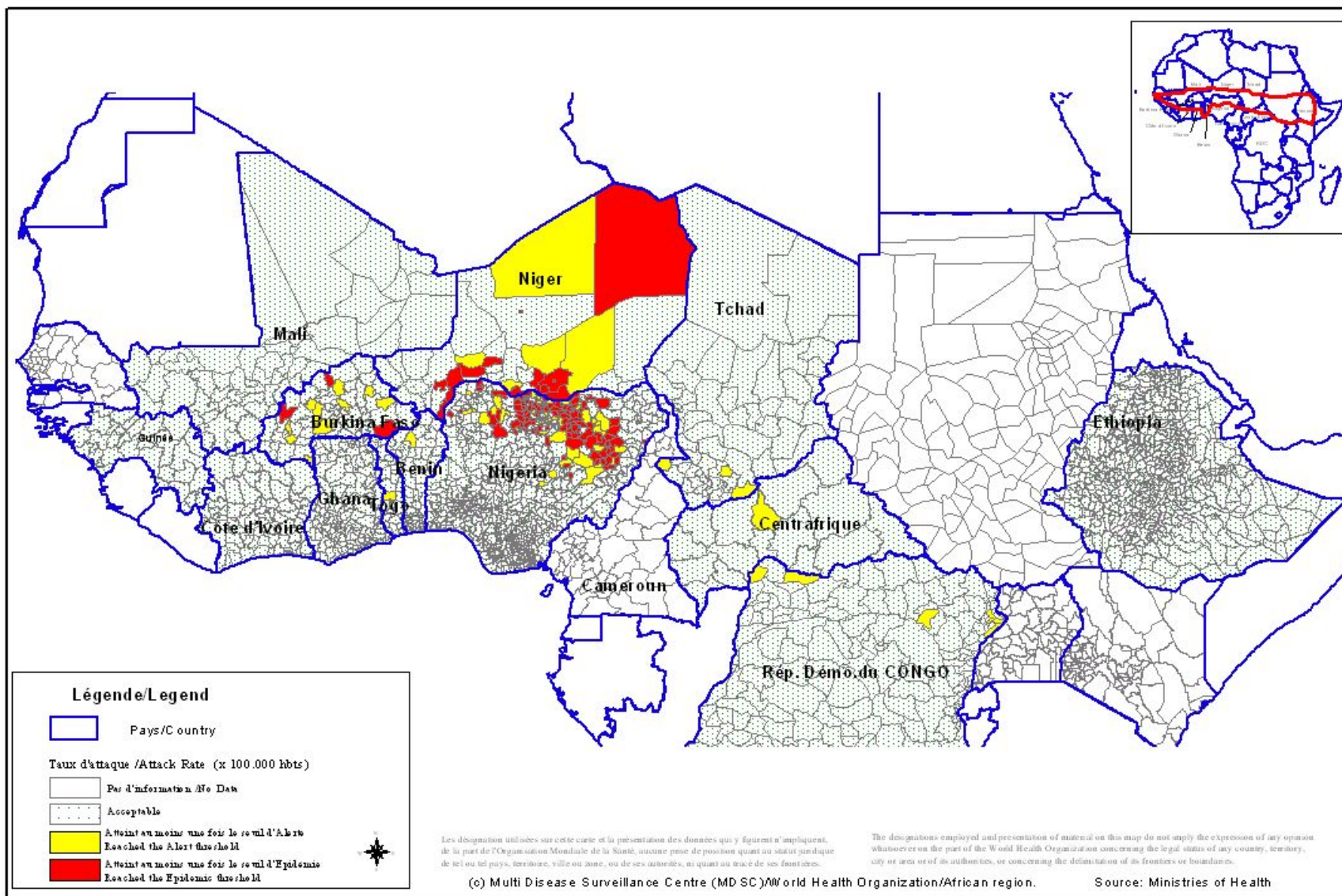


Figure 3. Taux d'attaque cumulés de la Méningite du Nigeria, Semaine 1 – 11, 2009
Cumulative Meningitis attack rates of Nigeria at week 1 - 11, 2009

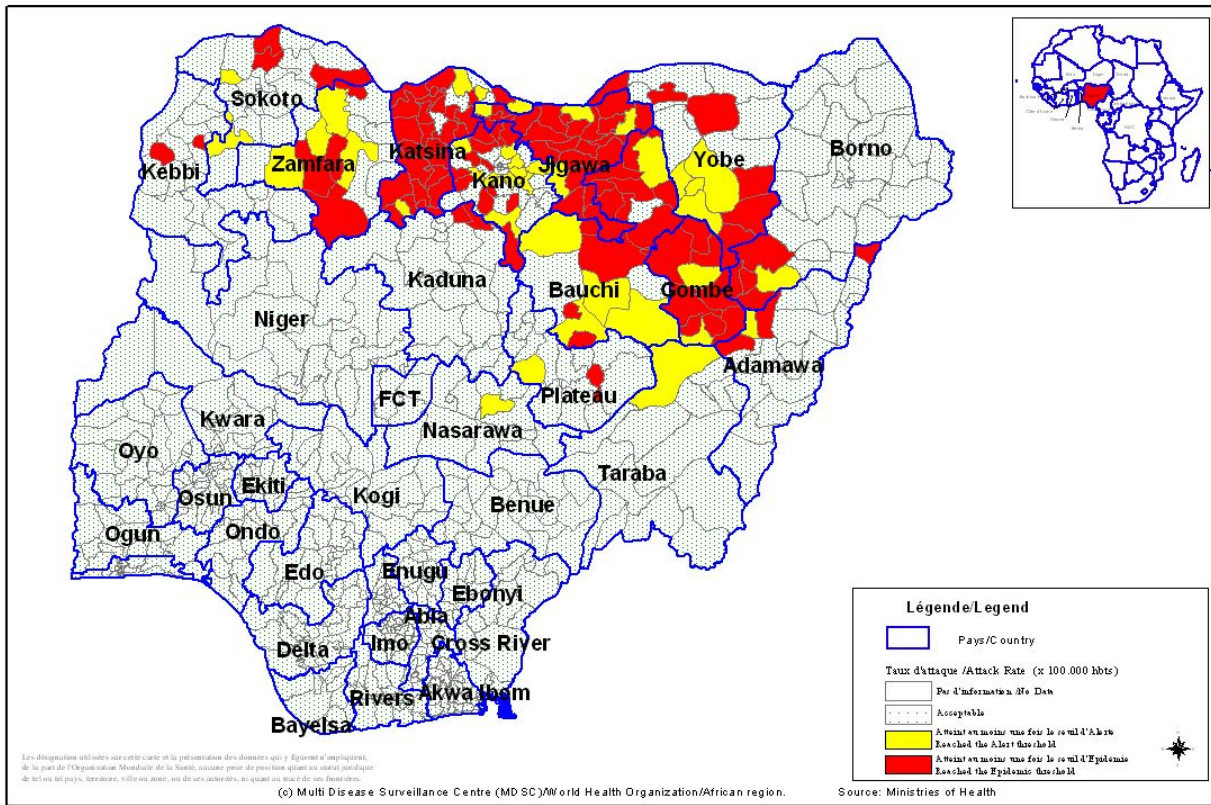
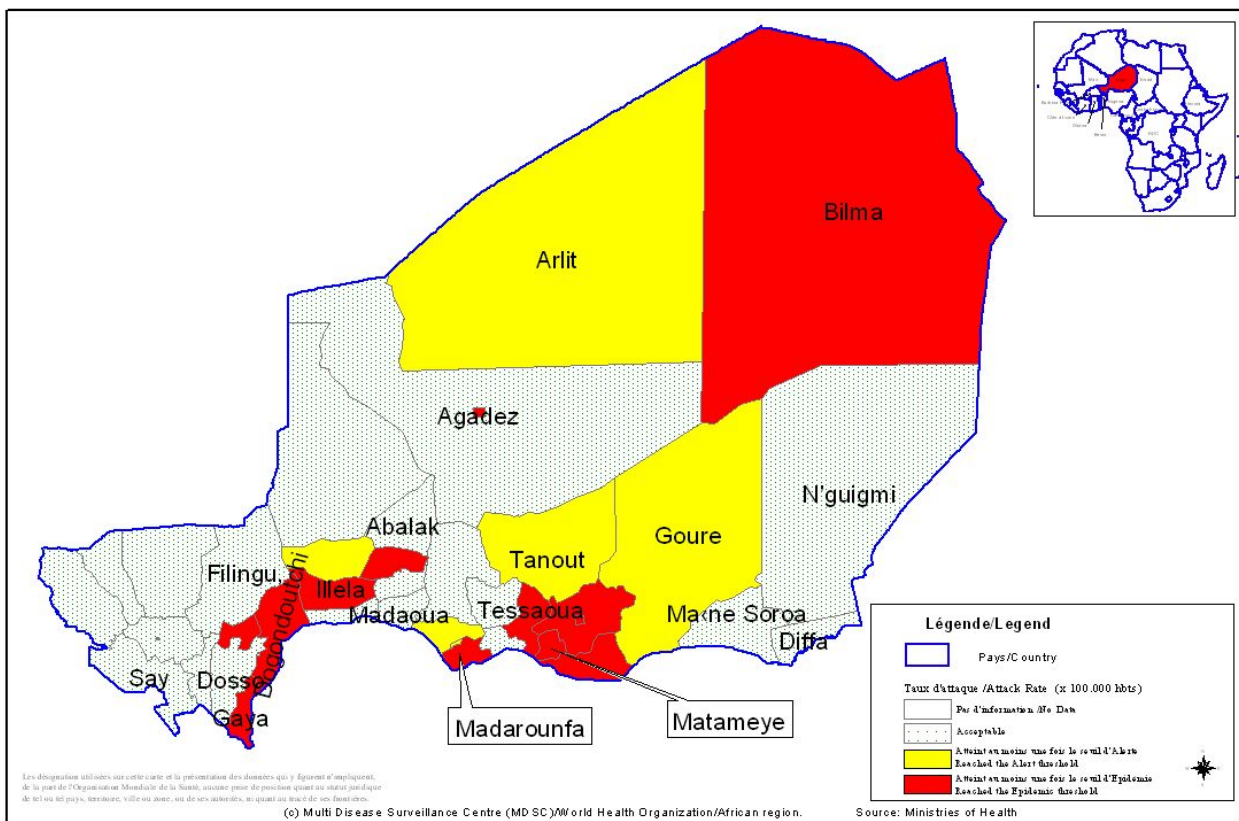


Figure 4. Taux d'attaque cumulés de la Méningite du Niger, Semaine 1 – 11, 2009
Cumulative Meningitis attack rates of Niger at week 1 - 11, 2009



IV. Courbes de tendance sur les deux dernières années/
Epidemiological trends during two consecutive years

Figure 3 : Evolution hebdomadaire comparative par pays des années 2008 et 2009/
(Uniquement les pays ayant transmis des données pour la semaine en cours)
Comparative weekly evolution by country, years 2008-2009
(Only countries which transmitted data during the current week)

