

Semaine / Week 12 2009

I. SITUATION EPIDEMIOLOGIQUE DE LA SEMAINE 12 (16 au 22 mars 2009) 2009
EPIDEMIOLOGICAL SITUATION OF WEEK 12 (16 to 22 March 2009) 2009

Tableau/ Table 1 : Situation épidémiologique de la semaine 12 (16 au 22 mars 2009)
Epidemiological Situation week 12 (16 to 22 March 2009)

Pays	Cas	Décès	Létalité (%)	District en Alerte	District en Epidémie	Complét. (%)	NmA	NmW135	Autres Nm	Pneum	Hib
Country	Case	Death	Lortality	District in Alert	District in Epidemic	Compleat (%)	NmA	NmW135	Other Nm	Pneum	Hib
Benin	-	-	-	-	-	-	-	-	-	-	-
Burkina Faso	248	27	10.9	3	0	100.0	-	-	-	-	-
Cameroun	-	-	-	-	-	-	-	-	-	-	-
Centrafrique	-	-	-	-	-	-	-	-	-	-	-
Cote d'Ivoire	-	-	-	-	-	-	-	-	-	-	-
Ethiopia	-	-	-	-	-	-	-	-	-	-	-
Ghana	-	-	-	-	-	-	-	-	-	-	-
Guinée	-	-	-	-	-	-	-	-	-	-	-
Mali	32	2	6.3	0	0	100.0	-	-	-	-	-
Niger	1156	37	3.2	12	9	100.0	-	-	-	-	-
Nigeria	5104	233	4.6	36	65	70.8	-	-	-	-	-
RD Congo**	51	6	11.8	2	0	8.2	-	-	-	-	-
Tchad	87	8	9.2	1	1	100.0	-	-	-	-	-
Togo	10	1	10	0	0	100.0	-	-	-	-	-
Total	6688	314	4.7	54	75	56.8	-	-	-	-	-

* Identification par / identification by: PCR, LATEX, CULTURE

** Définition des seuils d'alerte/épidémique non applicable à ce pays situé en dehors de la ceinture de la méningite
Definition of alert/epidemic thresholds not applicable to this country outside the meningitis belt

Commentaires:

Burkina Faso :

- Districts en alerte : Kougoussi, Titao et Ziniaré.

Niger :

- Districts en épidémie: Dogon-Doutchi, Dosso, Gaya, Loga, Madarounfa, Magaria, Matameye, Mirriah, et Zinder
- Districts en alerte: Agadez, Arlit, Boboye, Aguié, Maradi, Tessaoua, Niameyl, Birni Nkonni, Bouza, Keita, Tahoua et Tanout

Nigeria : 57 LGAs en épidémie et 33 LGAs en alerte
(Voir les détails à la page 3 et 4).

Tchad :

- District de N'Djamena est en épidémie
- District de Goundi en alerte

Comments:

Burkina Faso:

- Districts in alert: Kougoussi, Titao and Ziniaré.

Niger:

- District in epidemic: Dogon-Doutchi, Dosso, Gaya, Loga, Madarounfa, Magaria, Matameye, Mirriah, and Zinder
- Districts in alert: Agadez, Arlit, Boboye, Aguié, Maradi, Tessaoua, Niameyl, Birni Nkonni, Bouza, Keita, Tahoua and Tanout

Nigeria: 57 LGAs in epidemic and 33 LGAs in alert
(See details on page 3 and 4)

Chad:

- District of Ndjamena est in epidemic phase
- District of Goundi in alert phase.

Nous contacter / Contact us:

Multi Disease Surveillance Centre / Centre de Surveillance pluri pathologique
01 BP 549 Ouagadougou 01, Burkina Faso

Tel: (226) 50-34-29-53, Fax: (226) 50-34-29-53

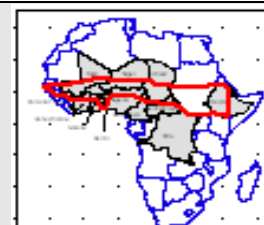
E.mail: mdsc@oncho.afro.who.int / Site web/Web site: www.who.int/csr;

<http://www.meningvax.org/press-reports.htm>

Nota bene: Les données publiées dans ce bulletin sont des informations hebdomadaires. Elles sont susceptibles d'évoluer après complétude et vérification.
The data published in this bulletin are weekly informations. They are susceptible to change after completeness and vérification.

Pays sous Surveillance Renforcée de la Méningite dans la Région Africaine de l'OMS

Countries under Enhanced Surveillance of Meningitis in the WHO African Region



II. SYNTHÈSE DE LA SITUATION ÉPIDÉMIOLOGIQUE 2009 (SEMAINES NOTIFIÉES 01 – 12)
 SYNTHESIS OF THE EPIDEMIOLOGICAL SITUATION 2009 (REPORTED WEEKS 1 – 12)

Tableau/ Table 2: Synthèse de la situation épidémiologique (semaines notifiées)/
 Synthesis of the epidemiological situation (reported weeks)

Pays	Cas	Décès	Létalité (%)	District en Alerte	District en Epidémie	Semaines notifiées	En districts (%)	En semaines(%)
Country	Case	Death	Letality (%)	District in Alert	District in Epidemic	Reported weeks	In districts (%)	In weeks
Benin	151	21	13.9	1	0	01-11	98.7	99.9
Burkina Faso	2 479	341	13.8	9	3	01-12	100.0	100.0
Cameroun	-	-	-	-	-	-	-	-
Centrafrique	41	17	41.5	2	0	01-11	100.0	100
Côte d'Ivoire	141	30	21.3	0	0	01-11	90.0	90.0
Ethiopia	32	6	18.8	0	0	01-07	-	-
Ghana	119	20	16.8	0	0	01-10	-	-
Guinée	-	-	-	-	-	-	-	-
Mali	139	13	9.4	0	0	01-12	100.0	100.0
Niger	5 729	206	3.6	9	16	01-12	100.0	100.0
Nigeria	23 149	1 255	5.4	49	126	01-12	70.8	99.9
RD Congo**	1 091	128	11.7	20	2	01-12	19.6	68.3
Tchad	599	79	13.2	3	2	01-12	100.0	98.1
Togo	140	19	13.6	1	0	01-12	100.0	99.5
Total	33 810	2 135	6.3	94	149	01-12	69.0	97.8

** Définition des seuils d'alerte/épidémique non applicable à ce pays situé en dehors de la ceinture de la méningite
 Definition of Alert/epidemic thresholds not applicable to this country outside the meningitis belt

Commentaires:

A la semaine 12, l'épidémie continue à progresser au Nigeria et au Niger, les deux pays les plus touchés. Le Tchad vient de rentrer en épidémie par un district de Ndjamena la capitale.

Comments:

At week 12, the epidemic is still evolving with Nigeria and Niger the two most affected countries. Chad is being touched with a district in the capitale Ndjamena.

Tableau/ Table 3: Pathogènes identifiés par PCR, Latex, Culture (semaines notifiées 2009)/
Pathogens identified by PCR, Latex, Culture (reported weeks 2009)

Pays	Nombre LCR	LCR contam	LCR negativ	NmA	NmW135	Autres Nm	S.Pneum	Hib	Autres Patho
Country	Number LCR	LCR contam	LCR negativ	NmA	NmW135	Other Nm	S.Pneum	Hib	Other Patho
Benin	110	0	48	0	2	0	45	0	15
Burkina Faso	135	0	73	18	1	0	43	0	0
Cameroun	-	-	-	-	-	-	-	-	-
Centrafrique	-	-	-	-	-	-	-	-	-
Cote d'Ivoire	21	0	18	0	0	0	2	1	0
Ethiopia	-	-	-	-	-	-	-	-	-
Ghana	11	0	0	1	1	0	8	1	0
Mali	-	-	-	-	-	-	-	-	-
Niger	1 190	0	615	514	1	2	43	6	9
Nigeria	105	0	42	53	7	0	2	0	1
RD Congo	-	-	-	-	-	-	-	-	-
Tchad	-	-	-	-	-	-	-	-	-
Togo	-	-	-	-	-	-	-	-	-
Total	1 572	0	796	586	12	2	143	8	25

Pathogen Identification par /Pathogen identification by: PCR, LATEX, CULTURE

Commentaires:

Les résultats de laboratoire au Nigeria et au Niger, les 2 pays en épidémie, ont mis en évidence principalement le *Neisseria meningitidis* A. Au Burkina Faso par contre c'est surtout le *Streptococcus pneumoniae* qui prédomine.

Comments:

The laboratory results in Nigeria and Niger, the 2 epidemic countries have mainly evidenced the *Neisseria meningitidis* A. In Burkina Faso however, *Streptococcus pneumoniae* is more prevailing.

Situation Épidémiologique de la méningite du Nigeria 2009/ (1/2)
Meningitis epidemiological situation 2009

SN	State	LGA	Population	Wk 01 Attack Rate	Wk 02 Attack Rate	Wk 03 Attack Rate	Wk 04 Attack Rate	Wk 05 Attack Rate	Wk 06 Attack Rate	Wk 07 Attack Rate	Wk 08 Attack Rate	Wk 09 Attack Rate	Wk 10 Attack Rate	Wk 11 Attack Rate	Wk 12 Attack Rate
1	Adamawa	Guyuk	193,705									10.32	8.26	12.39	23.75
2	Adamawa	Lamurde	122,904							4.07	4.88	20.34	5.70		
3	Adamawa	Madagali	146,900		0.68	0.68				10.21	2.72	6.13			2.72
4	Adamawa	Michika	169,209	0.59	1.18	2.95	1.77	6.50		4.14	4.73	12.41	2.95	4.73	6.50
5	Adamawa	Shelleng	162,418							1.23	5.54	7.39	42.48	33.86	3.69
6	Adamawa	Yola North	216,000	0.46							0.46			4.17	5.56
7	Bauchi	Alkaleri	364,181									6.32	5.77	0.82	0.82
8	Bauchi	Bauchi	545,911			0.37		0.55	0.18	0.18	7.69	6.59	3.85	7.33	7.14
9	Bauchi	Bogoro	93,100								2.15	8.59	17.19	65.52	22.56
10	Bauchi	Damban	166,845	1.20	2.40	4.20	9.59	7.19	17.98	28.77	49.75	23.37	50.95	23.37	25.77
11	Bauchi	Darazo	278,142					0.36	0.36	8.99	3.60	6.83	12.58	10.07	20.13
12	Bauchi	Dass	99,433						1.01				4.02	13.07	1.01
13	Bauchi	Gamawa	316,604					0.95	0.63	2.53	3.47	4.11	4.42	8.84	7.90
14	Bauchi	Ganjuwa	310,059			0.32					1.94		11.61	13.22	50.64
15	Bauchi	Giade	173,530	0.58						1.15	19.59	7.49	24.20	40.92	38.03
16	Bauchi	Itas-Gadua	254,262				2.75	1.57		1.97	11.41	17.30	17.30	46.41	22.02
17	Bauchi	Jama'Are	130,321							6.91	15.35	16.88	16.88	33.76	65.99
18	Bauchi	Katagum	327,197						4.89	6.11	22.62	12.23	24.45	38.51	33.92
19	Bauchi	Kirfi	163,193					1.23						1.23	5.51
20	Bauchi	Ningi	428,044		1.64							0.93	4.91	6.07	5.84
21	Bauchi	Shira	258,704					1.55		6.57	9.28	8.89	15.08	14.30	15.46
22	Bauchi	T/Balewa	243,198										4.93	6.99	3.29
23	Bauchi	Warji	126,824							5.52	3.94		3.94	14.98	9.46
24	Bauchi	Zaki	211,657					0.94	3.31		5.20	3.31	7.09	20.32	4.72
25	Borno	A/Uba	152,661								1.31	1.97		5.90	1.97
26	Borno	Bayo	87,311		5.73	5.73	16.03	8.02	10.31	18.33	18.33	35.51		37.80	93.92
27	Borno	Biu	194,649				1.54	1.03	3.60	4.11	8.22	13.36		4.62	
28	Borno	Hawul	133,008								3.01	9.02	3.01	2.26	
29	Borno	Kw/ Kusar	62,461								1.60	17.61		97.66	67.24
30	Borno	Shani	113,112						13.26	18.57	3.54	7.96		0.88	
31	Borno	Dambo	256,006											0.78	5.47
32	Gombe	Akko	371,336							1.62	4.58	7.81	16.43	16.70	16.97
33	Gombe	Balanga	233,614							4.28	4.28	23.54	3.85	21.83	65.92
34	Gombe	Billiri	222,177								3.60	9.90	9.90	13.05	9.00
35	Gombe	Dukku	227,724			0.88			2.63	2.20	23.27	16.25	13.61	45.23	24.59
36	Gombe	Funakaye	259,484			0.39	2.31	5.40	16.57	12.72	25.05	46.25	48.56	38.54	40.08
37	Gombe	Gombe	294,560		1.02	0.68	0.68	0.34	4.75	5.77	15.62	20.37	25.80	26.82	33.95
38	Gombe	Kaltungo	164,651		1.21				1.82	3.64	15.79	31.58	45.55	52.84	63.77
39	Gombe	Kwami	214,653							0.93	3.26	3.73	2.33	9.78	22.83
40	Gombe	Nafada	151,880					4.61	5.27	9.22	5.93	13.83	12.51	23.04	15.14
41	Gombe	Shongom	166,536				0.60	0.60		1.20	5.40	9.61	1.20	6.61	9.01
42	Gombe	Yamaltu Deba	280,544						0.71	4.63	12.12	37.78	44.56	50.62	75.21
43	Jigawa	Auyo	143,821					6.26	2.09	10.43	0.70	20.86	9.04	8.34	32.68
44	Jigawa	Babura	226,736		0.88	1.32		8.82	2.65	4.41	3.09	3.53	8.82		
45	Jigawa	Birnin-Kudu	341,435	0.29	1.76	2.05	2.64	3.22	7.32	10.54	27.53	41.30			
46	Jigawa	Birniwa	155,074						3.22	0.64	7.09		35.47	0.64	15.48
47	Jigawa	Buji	106,090				4.71	4.71	4.71	4.71	9.43	18.85	23.56	34.88	229.05
48	Jigawa	Dutse	268,184	1.12	0.37	0.75	0.75	1.49	2.24		8.95	2.98	14.92	14.92	22.37
49	Jigawa	Gagarawa	87,593			12.56			28.54		43.38		15.98		63.93
50	Jigawa	Garki	165,865				0.60		3.62		0.60		17.48		
51	Jigawa	Gumel	116,757			1.71	6.85	22.27			47.96		20.56		
52	Jigawa	Guri	125,318				0.80					7.18	9.58	11.97	35.91
53	Jigawa	Gwaram	296,991					0.67			4.71	9.09	11.45	23.57	23.57
54	Jigawa	Gwiwa	135,667									2.21	6.63	9.58	
55	Jigawa	Hadejia	115,087			0.87	1.74		1.74	31.28		18.25	36.49	20.85	28.67
56	Jigawa	Jahun	249,609			1.60			2.40		18.03	15.22	4.81	7.21	
57	Jigawa	Kafin Hausa	295,331	1.69	1.69			9.14	43.34	40.29	62.64	3.39		2.37	4.40
58	Jigawa	Kaugama	139,414					0.72	4.30	10.76	17.93	5.74	45.19	43.04	13.63
59	Jigawa	Kazaure	175,955				1.70	1.70	6.25	6.25		8.52	10.80	8.52	
60	Jigawa	Kiri-Kasamma	208,673						0.48		0.96	6.71	6.71	9.58	7.67

Situation Épidémiologique de la méningite du Nigeria 2009/ (2/2)

Meningitis epidemiological situation 2009

SN	State	LGA	Population	Wk 01	Wk 02	Wk 03	Wk 04	Wk 05	Wk 06	Wk 07	Wk 08	Wk 09	Wk 10	Wk 11	Wk 12				
				Attack Rate	Attack Rate	Attack Rate	Attack Rate	Attack Rate	Attack Rate	Attack Rate	Attack Rate	Attack Rate	Attack Rate	Attack Rate	Attack Rate				
61	Jigawa	Kiyawa	188,397	1.59	0.53	1.06	1.06	5.31	13.27	11.15	14.33	28.13	28.13	35.56	3.72				
62	Jigawa	Maigatari	195,808		0.51	0.51	4.60	5.82	2.04	10.21	4.09	6.13	8.17	7.15					
63	Jigawa	Malam-Maduri	175,867				1.14		1.71	11.94	11.94	17.06	14.78	12.51	14.78				
64	Jigawa	Miga	139,924			1.43		16.44	8.58	8.58	7.86	18.58	37.16	36.45	62.18				
65	Jigawa	Ringim	209,219					0.96	0.48	7.65	16.73	28.68	31.55	38.24					
66	Jigawa	Roni	84,787					7.08			16.51	16.51	11.79						
67	Jigawa	Sule-Tankarkar	142,566					13.33	7.72	14.75				47.00					
68	Jigawa	Taura	143,555						2.09	27.86			68.18	0.70					
69	Jigawa	Yankwashi	104,334							10.54	4.79	4.79							
70	Kaduna	Ilkara	211,908		3.30	8.97	8.49	6.13	5.19	15.57	11.80	6.81	4.72	3.30					
71	Kaduna	Lere	361,869							0.28	2.76		5.25	3.59					
72	Kaduna	Makarfi	159,821						22.53		1.88	6.26	13.14	8.76					
73	Kano	Ajingi	191,952			1.04		0.52	3.13	6.77	5.21	7.81	8.34						
74	Kano	Albasu	209,606					0.48	2.86	0.48			3.82	6.20					
75	Kano	Bagwai	179,507	5.01	3.34	4.46	5.57	8.38	11.14	16.16	31.75	22.28	12.81	25.63	16.71				
76	Kano	Bebeji	208,180		4.32	0.96	5.28	2.40	3.36	1.92	4.80	8.17	13.93	8.85					
77	Kano	Bichi	305,447			0.33	3.93	2.62	9.82	21.61	10.80	10.15	22.26						
78	Kano	Bunkure	168,374							2.12		0.53	1.59	7.43					
79	Kano	DKudu	248,447					2.82	5.23		6.44	6.44	2.01	4.03					
80	Kano	D/Tofa	273,233						0.73	1.83	5.86	0.37	0.37						
81	Kano	Dambatta	229,244				1.74	2.18	11.78	17.88	22.25	12.21							
82	Kano	Dogwowa	166,647						1.80	2.40	2.40	19.20							
83	Kano	Fagge	219,169			3.19	0.91	0.91			3.19	4.56	5.93						
84	Kano	G/Mallam	128,412					2.34			10.90		5.45	5.45					
85	Kano	Gaya	221,581			3.16	0.45	1.81	5.42	0.90	1.81	0.45	4.06						
86	Kano	Gezawa	310,925				1.61	0.32	0.64	1.93	2.57	5.79	0.64						
87	Kano	Gwarzo	202,809		3.94		2.47	2.96	10.85	13.31	4.93	0.49	1.48						
88	Kano	Kabo	169,565			0.59		5.90	7.08	2.95	7.87	7.08	35.38						
89	Kano	Kano Mun.	402,919					0.99	0.25		5.21	1.99	2.48						
90	Kano	Karaye	155,873		1.28	1.28		7.70	14.11	7.06		12.19	18.69						
91	Kano	Kibiya	150,724					1.99	37.15	39.81	4.64								
92	Kano	Kiru	291,989		0.34	0.34	3.08	7.54	3.77	1.03	3.77		0.69	0.69					
93	Kano	Kumbotso	326,259					0.31	0.92	0.92	7.05	3.68	4.90						
94	Kano	Kunchi	122,375				0.82	7.35	7.35	17.16	10.62	8.17	0.82						
95	Kano	Kura	159,394			2.51		3.14	6.90	0.63			3.14						
96	Kano	Madobi	150,600		1.33		0.66	2.66	2.66	3.32	5.31	5.31	11.95						
97	Kano	Makoda	245,151					5.71	11.01	17.95	15.08								
98	Kano	Mirjibir	235,666	0.85	0.85			1.70	0.85		9.34	13.15	5.94	3.39					
99	Kano	Nassarawa	657,710				0.15				6.08	2.89	6.54						
100	Kano	Shanono	154,992					2.58	0.65	5.81	0.65		4.52						
101	Kano	T/Wada	255,450					0.78	3.91	3.13	6.85	9.00	12.14						
102	Kano	Tofa	107,732	7.43	7.43	5.57	3.71	12.07	31.56	21.35	27.85	7.43	21.35	21.35	3.71				
103	Kano	Tsanyawa	173,811			2.30		1.15	2.30	13.23	9.78	6.90							
104	Kano	Ungogo	407,474						0.25	0.49	0.74	2.21	3.19	7.81					
105	Kano	Warawa	141,962					0.70	4.93	9.16		1.41	3.52	0.70					
106	Kano	Wudil	204,134		0.49	0.49	2.94	6.37	6.37		3.43	7.35							
107	Katsina	Bakori	163,222				3.06	3.06	1.23	30.83									
108	Katsina	Batagarawa	201,690		0.50		0.50	0.99	1.98	11.40	18.84	23.80	19.83	13.39					
109	Katsina	Batsari	228,358					6.13	2.19	3.07	31.53	8.76	7.44	6.13					
110	Katsina	Baure	215,732						2.78	6.49									
111	Katsina	Bindawa	166,494				1.80		9.61	51.66	25.83	26.43	39.04	52.66					
112	Katsina	Dandume	159,253				1.26		4.40	9.42	11.30	3.77							
113	Katsina	Danja	137,359					10.92	13.10	26.21	64.79	68.43	90.27	129.59					
114	Katsina	Danmusa	124,233		3.22			8.05	16.10	2.41	1.61	8.85	11.27	19.32	20.93				
115	Katsina	Daura	240,095			2.08		0.83	2.08		2.92	1.67	9.58	3.75					
116	Katsina	Dutsi	131,152			1.52		1.52			0.76	9.91	9.15						
117	Katsina	Dutsinma	185,404			1.08		1.08	3.24	4.85	16.72	31.28	11.87						
118	Katsina	Faskari	214,213				1.87	3.73	0.93	4.20	12.14	10.74							
119	Katsina	Funtua	246,488					2.84		6.09	1.22	11.77							
120	Katsina	Ingawa	185,494						11.88	16.17	23.18	19.41	10.24						
121	Katsina	Jibya	185,488										14.56	5.93	17.78	1.08			
122	Katsina	Kafur	221,697					0.45	5.66	7.22	4.96	0.45	8.57	16.69	7.67	9.47	18.49		
123	Katsina	Kaita	201,500					1.99			4.47	11.41	48.64	39.21	36.72				
124	Katsina	Kankara	268,526			0.37						5.21	2.23	14.52	41.34	13.78			
125	Katsina	Kankia	165,476		0.60		0.60	1.81	3.63	5.44	30.22	9.67	22.96	12.69	54.99	18.78			
126	Katsina	Katsina	347,989						2.01	2.30	0.86	7.76	4.60	12.93	11.21				
127	Katsina	Kurfi	128,484			5.45	2.33	10.13	3.89	19.46	35.60	21.78				6.23			
128	Katsina	Kusada	108,472						11.98	17.52	8.30	3.69	18.44			9.22			
129	Katsina	Malumfashi	199,882		1.50				7.50	13.01	18.01	29.02	23.01			53.03	58.03		
130	Katsina	Mani	193,376							7.24	3.10	2.07							
131	Katsina	Mashi	189,188							3.17			1.59				7.93		
132	Katsina	Matazu	126,019					1.59	6.35		5.55	12.70	15.67	3.97	24.60				
133	Katsina	Musawa	187,637					3.20	4.80	1.60	21.32	18.65	51.16				27.18		
134	Katsina	Rimi	168,000							4.76	8.33	8.33	4.76	8.33	33.93	57.14			
135	Katsina	Sabuwa	148,666										0.67	16.14					
136	Katsina	Safana	200,820					2.99	2.99	1.49	1.00	1.49	1.99	5.98			29.38		
137	Katsina	Sandamu	150,017		1.33	2.67		7.33	10.00	16.66			35.33	22.66			5.33		
138	Katsina	Zango	169,092										9.46	20.11		24.84	3.55		
139	Kebbi	Aliero	72,301										4.15	11.06					
140	Kebbi	Bunza	133,111										4.51	12.77	11.27		6.78		
141	Kebbi	Kalgo	93,594											3.21			8.55		
142	Kebbi	Suru	164,639														9.11		
143	Nasarawa	NIggon	162,957											6.14	0.61				
144	Plateau	Bokkos	193,303		0.52					0.52	0.52	0.52	5.17						
145	Plateau	Langtang North	152,345					0.66								14.44	3.28		
146	Sokoto	Binji	114,766											6.97	1.74	1.74	13.94		
147	Sokoto	Gudu	104,404											4.79			24.30		
148	Sokoto	Gwadabawa	252,811										9.10	14.64	7.52	30.46	4.75	5.54	2.37
149	Sokoto	Illela	164,443											24.93	6.69	14.59	4.26	9.12	
150	Sokoto	Isa	159,651											36.96	3.76				
151	Sokoto	Kebbe	136,217														27.16		
152	Sokoto	Tambuwal	245,798											5.70	3.25		6.10		
153	Sokoto	Wamako	196,275															7.13	
154	Taraba	K/Lamido	213,381											0.47	7.50	7.97	3.75	7.50	
155	Yobe	Bursari	120,988											16.53	4.13	8.27	2.48	2.48	
156	Yobe	Damaturu	97,583							1.02	8.20	8.20	18.45	12.30	14.35	12.30			
157	Yobe	Fika	151,778							6.59	9.88	5.93	2.64	1.98	1.98	9.22			
158	Yobe	Funke	333,458							5.40	0.60	2.40	0.90			6.00	3.60		
159	Yobe	Gujba	144,231							2.08	9.71	15.25	15.25	22.98	15.25				

III. REPRESENTATION GRAPHIQUE DES DONNEES/ GRAPHICAL REPRESENTATION OF DATA

Figure 1: Cartographie des taux d'attaque de la Méningite par district par pays de la semaine 12, 2009
Map of meningitis attack rates by district by country at week 12, 2009

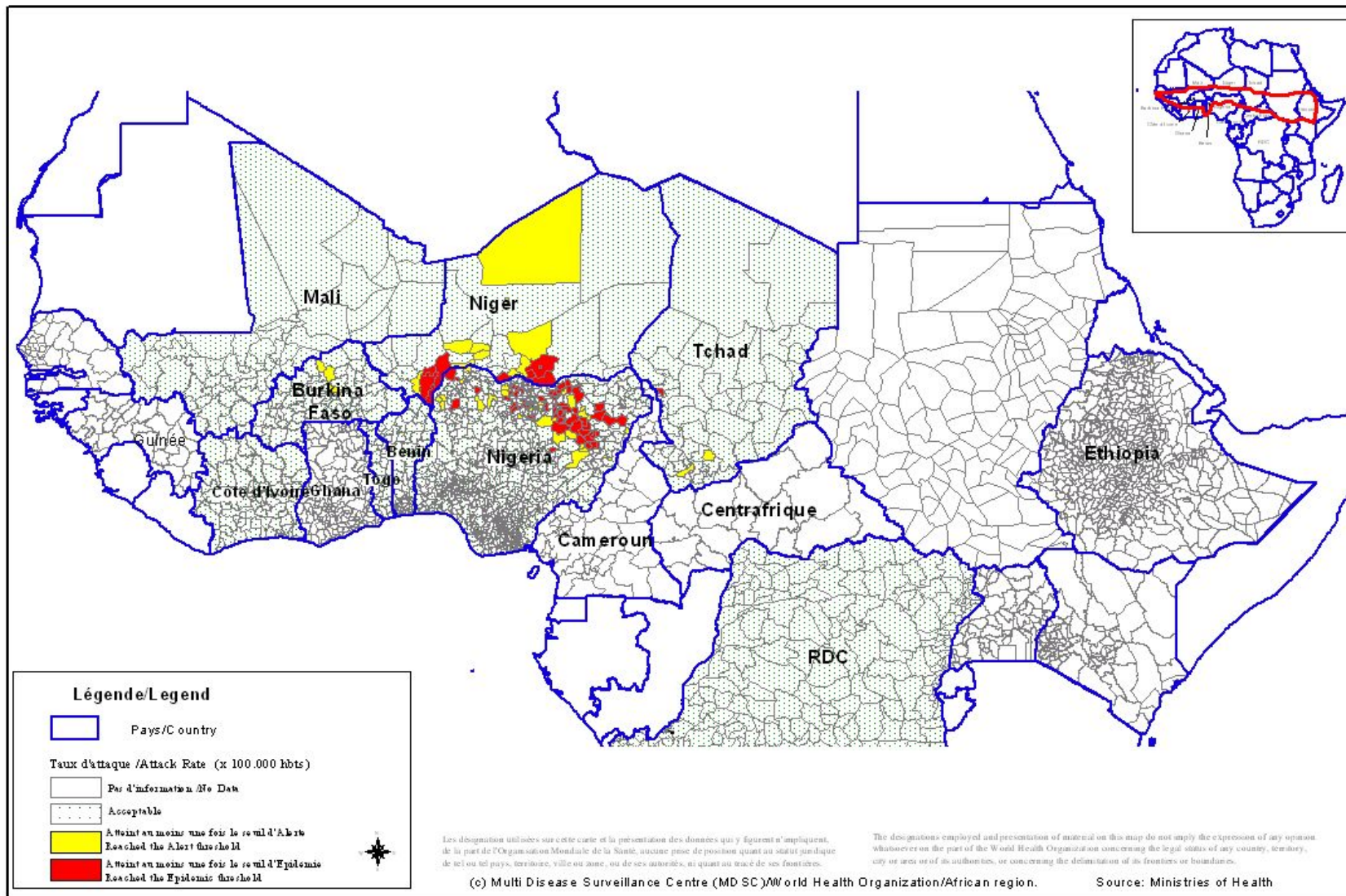


Figure 2 : Cartographie récapitulative des taux d'attaque cumulés de la Méningite, Semaine 01 – 12, 2009
 (Représentation basée sur les taux d'attaque hebdomadaires les plus élevés par district au cours de l'année)
Recapitulative map of cumulative Meningitis attack rates at week 1- 12, 2009
 (Mapping based on weekly highest attack rates by district during the year)

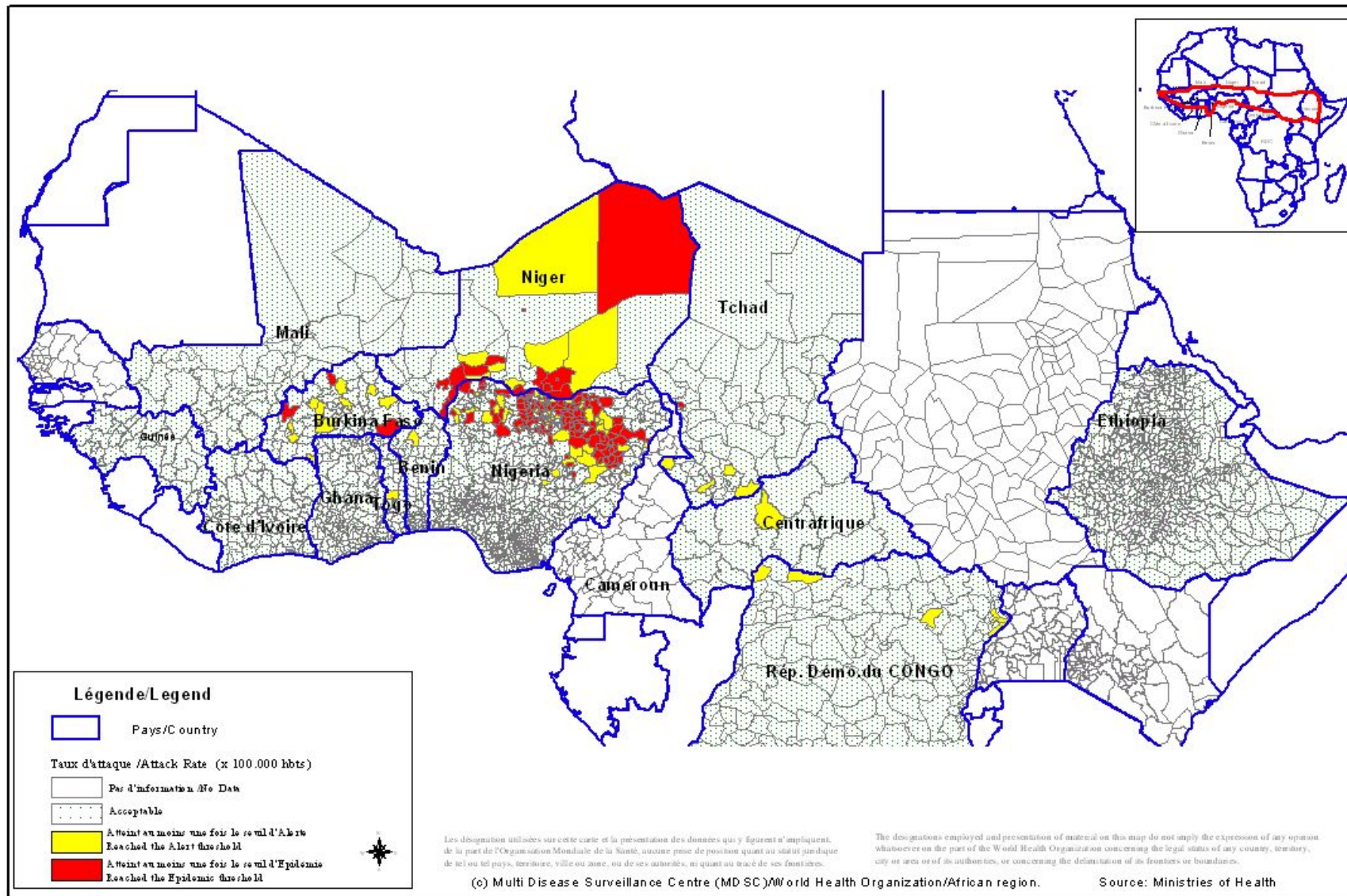


Figure 3. Taux d'attaque cumulés de la Méningite du Nigeria, Semaine 1 – 12, 2009
Cumulative Meningitis attack rates of Nigeria at week 1 - 12, 2009

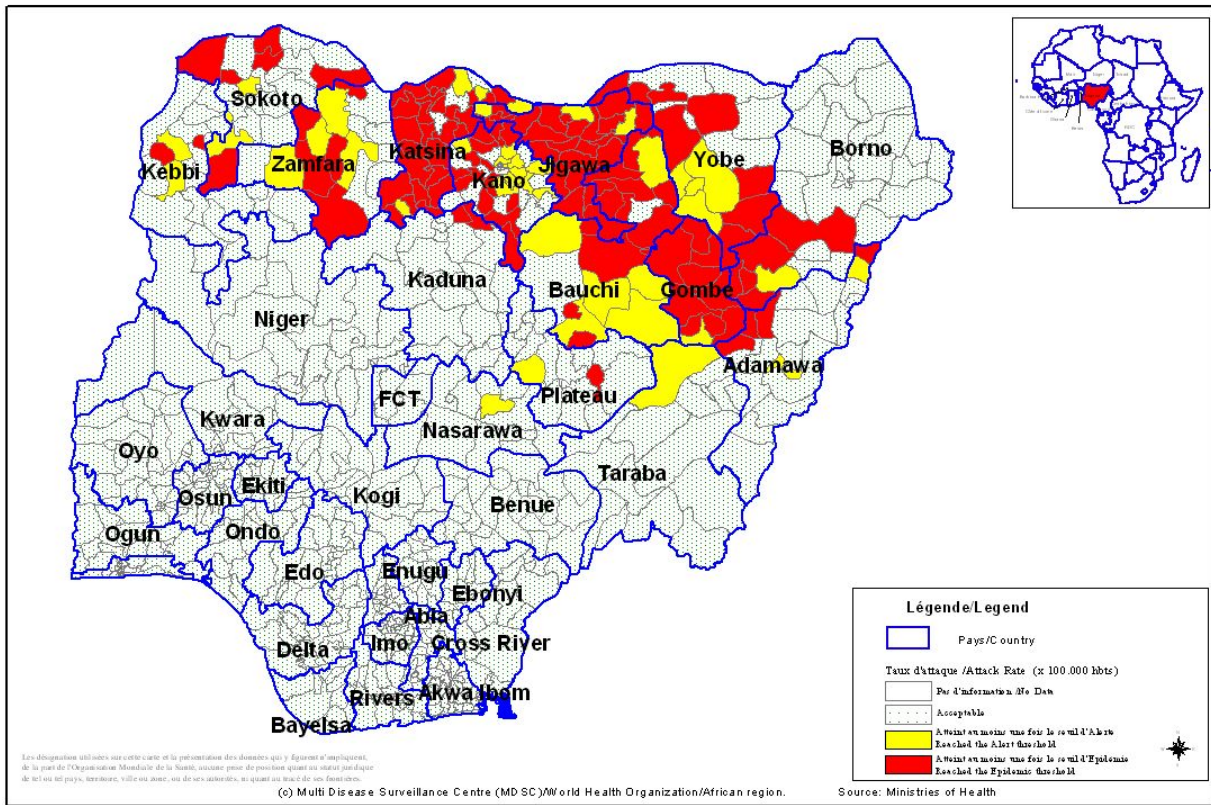
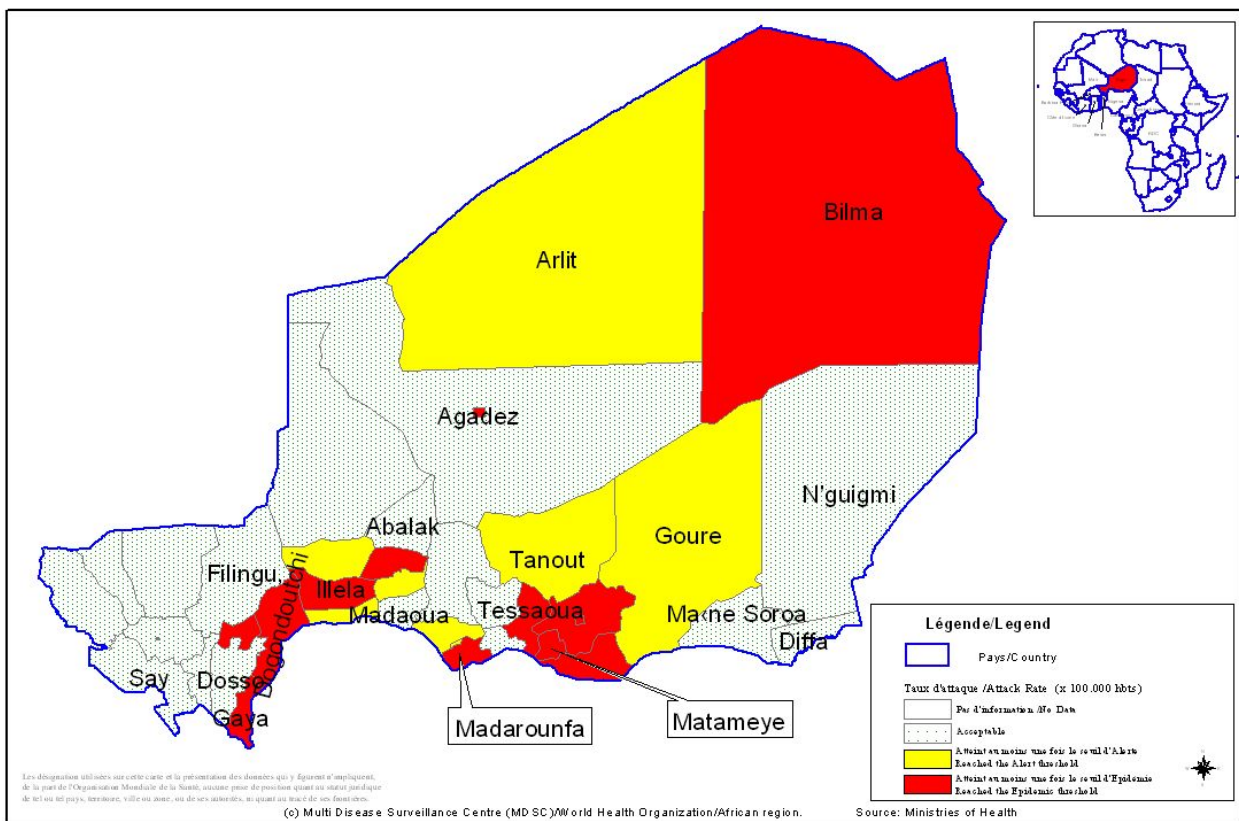


Figure 4. Taux d'attaque cumulés de la Méningite du Niger, Semaine 1 – 12, 2009
Cumulative Meningitis attack rates of Niger at week 1 - 12, 2009



IV. Courbes de tendance sur les deux dernières années/
Epidemiological trends during two consecutive years

Figure 3 : Evolution hebdomadaire comparative par pays des années 2008 et 2009/
(Uniquement les pays ayant transmis des données pour la semaine en cours)
Comparative weekly evolution by country, years 2008-2009
(Only countries which transmitted data during the current week)

