

Semaine / Week 17 2009

I. SITUATION EPIDEMIOLOGIQUE DE LA SEMAINE 17 (20 au 26 avril 2009) 2009  
EPIDEMIOLOGICAL SITUATION OF WEEK 17 (20 to 26 April 2009) 2009

**Tableau/ Table 1 : Situation épidémiologique de la semaine 17 (20 au 26 avril 2009) 2009 /  
Epidemiological Situation week 17 (20 to 26 April 2009) 2009**

Pays	Cas	Décès	Létalité (%)	District en Alerte	District en Epidémie	Complét. (%)	NmA	NmW135	Autres Nm	Pneum	Hib
Country	Case	Death	Lortality	District in Alert	District in Epidemic	Complect (%)	NmA	NmW135	Other Nm	Pneum	Hib
Benin	3	0	0.0	0	0	98.7	-	-	-	-	-
Burkina Faso	139	11	7.9	2	0	100.0	-	-	-	-	-
Cameroun	-	-	-	-	-	-	-	-	-	-	-
Centrafrique	15	1	6.7	0	1	25.0	-	-	-	-	-
Cote d'Ivoire	2	0	0	0	0	86.1	-	-	-	-	-
Ethiopia	-	-	-	-	-	-	-	-	-	-	-
Ghana	-	-	-	-	-	-	-	-	-	-	-
Guinée	-	-	-	-	-	-	-	-	-	-	-
Mali	7	0	0.0	0	0	100.0	-	-	-	-	-
Niger	550	32	5.8	7	3	100.0	111	1	1	1	0
Nigeria	2 227	56	2.5	24	41	70.8	-	-	-	-	-
RD Congo**	122	28	23.0	2	1	17.6	-	-	-	-	-
Tchad	42	2	4.8	1	0	100.0	-	-	-	-	-
Togo	3	0	0.0	0	0	100.0	-	-	-	-	-
<b>Total</b>	<b>3 110</b>	<b>130</b>	<b>4.2</b>	<b>36</b>	<b>46</b>	<b>66.7</b>	<b>111</b>	<b>1</b>	<b>1</b>	<b>1</b>	<b>0</b>

\* Identification par / identification by: PCR, LATEX, CULTURE

\*\* Définition des seuils d'alerte/épidémique non applicable à ce pays situé en dehors de la ceinture de la méningite  
Definition of alert/epidemic thresholds not applicable to this country outside the meningitis belt

**Commentaires:**

**Burkina Faso :** District en alerte : Titao et Séguénéga.

**Centrafrique :** District du 1<sup>er</sup> Arrondissement en épidémie.

**Niger :**

- District en épidémie: Boboye, Bilma et Tanout
- District en alerte: Diffa, Dosso, Madarounfa, Bouza, Keita, Tera et Zinder.

**Nigeria :** 39 LGAs en épidémie et 22 LGAs en alerte  
(Voir les détails à la page 3,4 et 5).

**RD. Congo :**

- District en épidémie: Lingwala
- District en alerte : Gombari et Kikula

**Tchad :**

- District en alerte : N'Djaména Est.

**Comments:**

**Burkina Faso:** District in alert: Titao and Séguénéga.

**Central Africa:** District of 1<sup>er</sup> Arrondissement in epidemic phase.

**Niger:**

- District in epidemic : Boboye, Bilma and Tanout
- District in alert: Diffa, Dosso, Madarounfa, Bouza, Keita, Tera and Zinder.

**Nigeria:** 39 LGAs in epidemic and 22 LGAs in alert  
(See details on page 3, 4 and 5).

**DR Congo:**

- District in epidemic: Lingwala
- District in alert : Gombari and Kikula

**Chad:**

- District in alert: N'Djamena East

**Nous contacter / Contact us:**

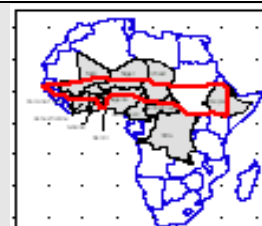
Multi Disease Surveillance Centre / Centre de Surveillance pluri pathologique  
01 BP 549 Ouagadougou 01, Burkina Faso  
Tel: (226) 50-34-29-53, Fax: (226) 50-34-29-53

E.mail: [mdsc@oncho.afro.who.int](mailto:mdsc@oncho.afro.who.int) / Site web/Web site: [www.who.int/csrf](http://www.who.int/csrf)  
<http://www.meningvax.org/press-reports.htm>

Nota bene: Les données publiées dans ce bulletin sont des informations hebdomadaires. Elles sont susceptibles d'évoluer après complétude et vérification.  
The data published in this bulletin are weekly informations. They are susceptible to change after completeness and verification.

Pays sous Surveillance  
Renforcée de la Méningite dans  
la Région Africaine de l'OMS

Countries under Enhanced  
Surveillance of Meningitis in the  
WHO African Region



II. SYNTHÈSE DE LA SITUATION ÉPIDÉMIOLOGIQUE 2009 (SEMAINES NOTIFIÉES 01 – 17)  
 SYNTHESIS OF THE EPIDEMIOLOGICAL SITUATION 2009 (REPORTED WEEKS 1 – 17)

**Tableau/ Table 2:** Synthèse de la situation épidémiologique (semaines notifiées)/  
 Synthesis of the epidemiological situation (reported weeks)

Pays	Cas	Décès	Létalité (%)	District en Alerte	District en Epidémie	Semaines notifiées	En districts (%)	En semaines (%)
Country	Case	Death	Letality (%)	District in Alert	District in Epidemic	Reported weeks	In districts (%)	In weeks
<b>Benin</b>	196	24	12.2	1	0	01-17	98.7	99.9
<b>Burkina Faso</b>	3 529	449	12.7	11	3	01-17	100.0	100.0
Cameroun	-	-	-	-	-	-	-	-
<b>Centrafrique</b>	275	43	15.6	2	1	01-17	100.0	87.0
<b>Côte d'Ivoire</b>	176	34	19.3	0	0	01-17	100.0	75.8
Ethiopia	32	6	18.8	0	0	01-07	-	-
Ghana	119	20	16.8	0	0	01-10	-	-
Guinée	-	-	-	-	-	-	-	-
<b>Mali</b>	187	15	8.0	0	0	01-17	100.0	100.0
<b>Niger</b>	11 802	472	4.0	12	22	01-17	100.0	100.0
<b>Nigeria</b>	47 902	2 148	4.5	47	166	01-17	70.8	99.9
<b>RD Congo**</b>	2 066	220	10.6	26	5	01-17	20.3	85.6
<b>Tchad</b>	1 169	128	10.9	5	3	01-17	100.0	98.6
<b>Togo</b>	177	21	11.9	1	0	01-17	100.0	99.5
<b>Total</b>	<b>67 630</b>	<b>3 580</b>	<b>5.3</b>	<b>105</b>	<b>200</b>	<b>01-17</b>	<b>69.8</b>	<b>96.8</b>

\*\* Définition des seuils d'alerte/épidémique non applicable à ce pays situé en dehors de la ceinture de la méningite  
 Definition of Alert/epidemic thresholds not applicable to this country outside the meningitis belt

<b>Commentaires:</b>	<b>Comments:</b>
L'accalmie sur le front épidémique se confirme en cette période (semaine 17) avec la diminution de nombre de cas et également du nombre de districts en épidémie et en alerte dans les pays les plus affectés cette année.	The downward trend of the epidemic is maintained during week 17, with the reduction in the number of cases as well as the number of epidemic and alert districts in the most affected countries of this year.

**Tableau/ Table 3: Pathogènes identifiés par PCR, Latex, Culture (semaines notifiées 2009)/  
 Pathogens identified by PCR, Latex, Culture (reported weeks 2009)**

Pays	Nombre LCR	LCR contam	LCR negativ	NmA	NmW135	Autres Nm	S.Pneum	Hib	Autres Patho
Country	Number LCR	LCR contam	LCR negativ	NmA	NmW135	Other Nm	S.Pneum	Hib	Other Patho
Benin	114	0	49	0	3	0	45	0	17
Burkina Faso	275	5	151	36	3	0	78	0	2
Cameroun	-	-	-	-	-	-	-	-	-
Centrafrique	-	-	-	-	-	-	-	-	-
Cote d'Ivoire	89	0	84	0	0	1	2	1	0
Ethiopia	-	-	-	-	-	-	-	-	-
Ghana	11	0	0	1	1	0	8	1	0
Mali	53	0	34	16	2	0	1	0	0
<b>Niger</b>	<b>2 814</b>	<b>0</b>	<b>1 486</b>	<b>1 192</b>	<b>4</b>	<b>3</b>	<b>55</b>	<b>8</b>	<b>36</b>
Nigeria	105	0	42	53	7	0	2	0	1
RD Congo	-	-	-	-	-	-	-	-	-
Tchad	295	0	116	45	59	0	67	8	0
Togo	-	-	-	-	-	-	-	-	-
<b>Total</b>	<b>3 756</b>	<b>5</b>	<b>1 962</b>	<b>1 343</b>	<b>79</b>	<b>4</b>	<b>258</b>	<b>18</b>	<b>56</b>

Pathogen Identification par /Pathogen identification by: PCR, LATEX, CULTURE

<b>Commentaires:</b>	<b>Comments:</b>
La proportion des cas suspects ayant bénéficié de prélèvement d'échantillon et de résultats laboratoire reste faible en dehors du Niger où un effort appréciable est fait chaque année pour la confirmation du maximum de cas suspects.	The proportion of cases with laboratory samples taken is globally weak in the countries except in Niger where every year the system in place allows them to get a good number of laboratory confirmed cases.

**Situation Épidémiologique de la méningite du Nigeria 2009/ (1/3)**  
*Meningitis epidemiological situation 2009*

SN	State	LGA	Population	Wk 01 Attack Rate	Wk 02 Attack Rate	Wk 03 Attack Rate	Wk 04 Attack Rate	Wk 05 Attack Rate	Wk 06 Attack Rate	Wk 07 Attack Rate	Wk 08 Attack Rate	Wk 09 Attack Rate	Wk 10 Attack Rate	Wk 11 Attack Rate	Wk 12 Attack Rate	Wk 13 Attack Rate	Wk 14 Attack Rate	Wk 15 Attack Rate	Wk 16 Attack Rate	Wk 17 Attack Rate	
1	Adamawa	Gombi	159,541									1.25			5.64	2.51	2.51				
2	Adamawa	Guyuk	193,705									6.19	6.19	17.55	23.75	9.81	6.71	3.10	4.13		
3	Adamawa	Lamurde	122,904							4.07	4.88	20.34	5.70	8.95	1.63	1.63					
4	Adamawa	Madagali	146,900		0.68	0.68				10.21	2.72	6.13				2.72	7.49				
5	Adamawa	Maiha	121,174												1.65	11.55	3.30				
6	Adamawa	Mayo Belwa	166,841										3.60		7.19	8.99					
7	Adamawa	Michika	169,209	0.59	1.18	2.95	1.77	6.50		4.14	4.73	12.41	2.95	6.50	6.50	4.14	1.77	3.55	1.77		
8	Adamawa	Numan	98,847								1.01	1.01	1.01	8.09	8.09	5.06				3.03	
9	Adamawa	Shelleng	162,418							1.23	5.54	7.39	42.48	33.86	25.24	25.86					
10	Adamawa	Song	209,953								1.91	4.29	4.76	12.86	3.33	8.57	7.14	4.29			
11	Adamawa	Yola North	216,000	0.46						0.46				4.17	5.56	7.87	2.31	3.24	6.48		
12	Adamawa	Yola South	212,034							0.94	0.47	0.47	1.41			8.49					
13	Bauchi	Alkaleri	364,181									6.32	5.77	0.82	0.82	14.83	12.08	3.30	3.02	1.92	
14	Bauchi	Bauchi	545,911			0.37		0.55	0.18	0.18	7.69	6.59	3.85	7.33	7.14	10.07	20.33	28.26	27.84	3.85	
15	Bauchi	Bogoro	93,100								2.15	8.59	17.19	65.52	22.56	37.59	3.22	4.30	9.67	12.89	
16	Bauchi	Damban	166,845	1.20	2.40	4.20	9.59	7.19	17.98	28.77	49.75	23.37	50.95	23.37	25.77	23.97	22.78	22.18	19.18	10.19	
17	Bauchi	Darazo	278,142					0.36	0.36	8.99	3.60	6.83	12.58	10.07	20.13	26.61	20.85	15.10	9.35	5.75	
18	Bauchi	Dass	99,433						1.01				4.02	13.07	1.01	7.04	5.03	5.03	12.07	10.06	
19	Bauchi	Gamawa	316,604					0.95	0.63	2.53	3.47	4.11	4.42	8.84	7.90	3.47	4.74	13.58	5.37	3.79	
20	Bauchi	Ganjuwa	310,059			0.32					1.94		11.61	13.22	50.64	45.15	56.12	21.93	17.74	35.15	
21	Bauchi	Giade	173,530	0.58						1.15	19.59	7.49	24.20	40.92	38.03	78.95	76.07	66.27	59.36	29.97	
22	Bauchi	Itas-Gadua	254,262				2.75	1.57			1.97	11.41	17.30	6.69	46.41	22.02	31.46	76.30	25.96	13.77	7.08
23	Bauchi	Jama'Are	130,321								6.91	15.35	16.88	17.65	33.76	65.99	45.27	216.39	39.90	42.20	13.81
24	Bauchi	Katagum	327,197						4.89	6.11	22.62	12.23	24.45	38.51	33.92	50.73	41.57	16.20	25.37	11.31	
25	Bauchi	Kirfi	163,193					1.23						1.23	5.51	5.51	6.74	41.06	16.54	7.35	
26	Bauchi	Misau	291,287						1.37				3.78	3.43	4.12	4.12	17.51	27.46	21.97	10.30	7.55
27	Bauchi	Ningi	428,044		1.64							0.93	4.91	6.07	5.84	19.66	10.51	16.12	39.95	12.38	
28	Bauchi	Shira	258,704					1.55		6.57	9.28	8.89	15.08	14.30	15.46	17.39	14.69	10.44	11.60	4.64	
29	Bauchi	T/Balewa	243,198										4.93	6.99	3.29	3.70	5.35	6.99	2.47	7.81	
30	Bauchi	Toro	387,374								3.10	1.29	0.52	2.84	4.90	2.32	8.78	8.00	5.16	4.39	
31	Bauchi	Warji	126,824							5.52	3.94		3.94	14.98	9.46	16.56	8.67	6.31	43.37	0.79	
32	Bauchi	Zaki	211,657					0.94	3.31		5.20	3.31	7.09	20.32	4.72	8.98	4.25	10.39	12.76	8.98	
33	Borno	A/Uba	152,661								1.31	1.97		5.90	1.97	7.86	8.52				
34	Borno	Bayo	87,311		5.73	5.73	16.03	8.02	10.31	18.33	18.33	35.51		37.80	93.92	64.14	49.25	28.83			
35	Borno	Biu	194,649				1.54	1.03	3.60	4.11	8.22	13.36	8.22	8.73	7.71	17.47	13.36	20.04	2.05		
36	Borno	Hawul	133,008								3.01	9.02	3.01	2.26		1.50	1.50			1.50	
37	Borno	Jere	233,488									1.28		2.14		2.14	7.28	14.99	34.68		
38	Borno	Kaga	99,512										2.01		2.01	4.02	5.02	10.05	5.02		
39	Borno	Kw/ Kusar	62,461								1.60	17.61	14.41	97.66	67.24	35.22	24.01	9.61		8.00	
40	Borno	Shani	113,112						13.28	18.57	3.54	7.96		0.88		6.19	1.77				
41	Borno	Dambo	256,006										0.78	5.47	6.64	8.20	4.30	2.34	10.94		
42	Gombe	Akko	371,336							1.62	4.58	7.81	16.43	16.70	16.97	31.51	16.97	14.81	7.00	3.23	
43	Gombe	Balanga	233,614							4.28	4.28	23.54	3.85	21.83	65.92	47.94	29.11	25.26	8.99	4.71	
44	Gombe	Billiri	222,177								3.60	9.90	9.90	13.05	9.00	11.25	4.50	1.80	4.95		
45	Gombe	Dukku	227,724			0.88			2.63	2.20	23.27	16.25	13.61	45.23	24.59	38.20	21.08	16.25	5.71	0.44	
46	Gombe	Funakaye	259,484			0.39	2.31	5.40	16.57	12.72	25.05	46.25	48.56	38.54	40.08	50.48	40.46	34.30	14.26	5.01	
47	Gombe	Gombe	294,560		1.02	0.68	0.68	0.34	4.75	5.77	15.62	20.37	25.80	26.82	33.95	55.34	39.38	17.85	6.45	3.39	
48	Gombe	Kaltungo	164,651		1.21				1.82	3.64	15.79	31.58	45.55	52.84	63.77	44.94	27.33	21.86	4.25		
49	Gombe	Kwami	214,653							0.93	3.26	3.73	2.33	9.78	22.83	20.03	20.96	20.03	20.50	10.25	
50	Gombe	Nafada	151,880					4.61	5.27	9.22	5.93	13.83	12.51	23.04	15.14	31.60	33.58	14.49	7.90	1.32	
51	Gombe	Shongom	166,536				0.60	0.60		1.20	5.40	9.61	1.20	6.61	9.01	3.60	1.20	10.21	3.00	0.60	
52	Gombe	Yamaltu Deba	280,544						0.71	4.63	12.12	37.78	44.56	50.62	75.21	83.77	95.89	51.33	30.30	13.90	
53	Jigawa	Auyo	143,821					6.26	2.09	10.43	0.70	20.86	9.04	8.34	32.68	14.60		14.60	22.25		
54	Jigawa	Babura	226,736		0.88	1.32		8.82	2.65	4.41	3.09	3.53	8.82								
55	Jigawa	Birnin-Kudu	341,435	0.29	1.76	2.05	2.64	3.22	7.32	10.54	27.53	41.30					55.35		16.40	52.43	
56	Jigawa	Birniwa	155,074						3.22	0.64	7.09		35.47	0.64	15.48		36.11	29.02			
57	Jigawa	Buji	106,090				4.71	4.71	4.71	4.71	9.43	18.85	23.56	34.88	229.05				83.89	103.69	
58	Jigawa	Dutse	268,184	1.12	0.37	0.75	0.75	1.49	2.24		8.95	2.98	14.92	14.92	22.37	28.71		16.78		12.30	
59	Jigawa	Gagarawa	87,593			12.56			28.54		43.38		15.98		63.93	67.36			52.52		
60	Jigawa	Garki	165,865				0.60		3.62		0.60		17.48			28.94	47.63			36.78	
61	Jigawa	Gumel	116,757			1.71	6.85	22.27				47.96		20.56		54.81		36.83	34.26	37.69	
62	Jigawa	Guri	125,318				0.80					7.18	9.58	11.97	35.31			81.39	43.89	22.34	
63	Jigawa	Gwaram	296,991					0.67			4.71	9.09	11.45	23.57	23.57			53.20	6.73	16.84	
64	Jigawa	Gwiwa	135,667								2.21	6.63	9.58			14.00		11.06	6.63	5.16	
65	Jigawa	Hadejia	115,087			0.87	1.74		1.74	31.28		18.25	36.49	20.85	28.67	32.15					
66	Jigawa	Jahun	249,609			1.60			2.40		18.03	15.22	4.81	7.21		47.67		18.03	18.83		
67	Jigawa	Kafin Hausa	295,331	1.69	1.69			9.14	43.34	40.29	62.64	3.39		2.37	4.40	28.10					
68	Jigawa	Kaugama	139,414				0.72	4.30	10.76	17.93	5.74	45.19	43.04	13.63	41.60	96.12	28.89				
69	Jigawa	Kazaure	175,955				1.70	1.70	6.25	6.25		8.52	10.80	8.52		19.89	5.68		3.41	4.55	
70	Jigawa	Kiri-Kasamma	208,673						0.48		0.96	6.71	6.71	9.58	7.67	3.35				7.19	
71	Jigawa	Kiyawa	188,397	1.59	0.53	1.06	1.06	5.31	13.27	11.15	14.33	28.13	28.13	35.56	3.72	44.59	9.02		10.62	20.70	

**Situation Épidémiologique de la méningite du Nigeria 2009/ (2/3)**  
*Meningitis epidemiological situation 2009*

SN	State	LGA	Population	Wk 01 Attack Rate	Wk 02 Attack Rate	Wk 03 Attack Rate	Wk 04 Attack Rate	Wk 05 Attack Rate	Wk 06 Attack Rate	Wk 07 Attack Rate	Wk 08 Attack Rate	Wk 09 Attack Rate	Wk 10 Attack Rate	Wk 11 Attack Rate	Wk 12 Attack Rate	Wk 13 Attack Rate	Wk 14 Attack Rate	Wk 15 Attack Rate	Wk 16 Attack Rate	Wk 17 Attack Rate		
72	Jigawa	Maigatari	195,808		0.51	0.51	4.60	5.62	2.04	10.21	4.09	6.13	8.17	7.15		4.60	7.66		7.15	3.06		
73	Jigawa	Malam-Maduri	175,867				1.14		1.71	11.94	11.94	17.00	14.78	12.51	14.78	42.08		6.82	53.45	25.02		
74	Jigawa	Miga	139,924			1.43		16.44	8.58	8.58	7.66	18.58	37.16	36.45	62.16		22.87		27.87	6.72		
75	Jigawa	Ringim	209,219					0.96	0.48	7.65		16.73	28.68	31.55	38.24	22.94			30.59	13.38		
76	Jigawa	Roni	84,787							7.08		16.51	16.51	11.79		83.74		8.26	16.51			
77	Jigawa	Sule-Tankarkar	142,566					13.33	7.72	14.73				47.00		30.86	20.34		49.80	14.73		
78	Jigawa	Taura	143,555							2.09	27.86			66.18	0.70	190.17			33.44	34.83		
79	Jigawa	Yankwashi	104,334								10.54	4.79	4.79			7.67	6.71	24.92	26.88			
80	Kaduna	Igabi	470,123								3.83	1.49	0.64			3.83	10.42	13.40	12.34	3.40	3.19	
81	Kaduna	Ikara	211,908			3.30	8.97	8.49	6.13	5.19	15.57	11.80	6.61	4.72	3.30		4.25	4.72	2.83			
82	Kaduna	Kauru	185,772										1.08	0.54		3.23			6.48	2.15		
83	Kaduna	Lere	361,869								0.28	2.76		5.25	3.59	7.46	9.95	4.97	1.66	2.21		
84	Kaduna	Makarfi	159,821							22.53		1.88	6.26	13.14	8.76	16.89	8.13	5.63	3.13	0.63		
85	Kano	Ajingi	191,952					1.04		0.52	3.13	6.77	5.21	7.81	8.34		19.26	22.92	6.25	5.21		
86	Kano	Albasu	209,606						0.48	2.86	0.48			3.82	6.20	0.54	20.99	2.86				
87	Kano	Bagwai	179,507	5.01	3.34	4.46	5.57	8.36	11.14	16.16	31.75	22.28	12.81	25.63	16.71	10.03	6.13	5.01	3.34	0.56		
88	Kano	Bebeji	208,180		4.32	0.96	5.28	2.40	3.36	1.92		4.80	8.17	13.93	8.65	5.76	14.89	29.76	4.32	2.88		
89	Kano	Bichi	305,447			0.33	3.93	2.62	9.82	21.61	10.80	10.15	22.26			49.76	61.55	60.89	25.54			
90	Kano	Bunkure	188,374								2.12		0.53	1.59	7.43	15.39						
91	Kano	D/Kudu	248,447						2.82	5.23		6.44	6.44	2.01	4.03		25.36	32.20		10.87		
92	Kano	D/Tofa	273,233								0.73	1.83	5.86	0.37	0.37	19.03						
93	Kano	Dambatta	229,244						1.74	2.18	11.78	17.88	22.25	12.21		19.19	47.98	19.63	10.47	5.67		
94	Kano	Dogwau	166,847								1.80	2.40	2.40	19.20								
95	Kano	Fagge	219,169					3.19	0.91	0.91			3.19	4.56	5.93		31.03	39.24	20.99	17.34		
96	Kano	G/Mallam	128,412						2.34			10.90		5.45	5.45	14.90	26.48		6.23			
97	Kano	Garko	179,124						1.12	3.35	2.79		1.12	4.47		12.28	16.75	13.96	12.28	10.05		
98	Kano	Gaya	221,581				3.16	0.45		1.81	5.42	0.90	1.81	0.45	4.08	0.90			4.51			
99	Kano	Gezawa	310,925						1.61	0.32	0.64		1.93	2.57	5.79	0.64	5.47	3.86		5.47	0.96	
100	Kano	Gwale	399,099							0.50			0.75	3.01	4.26	5.01	13.53	1.25				
101	Kano	Gwarzo	202,809			3.94		2.47	2.96	10.85	13.31	4.93		0.49	1.48		40.93	8.36	7.40	4.44		
102	Kano	Kabo	169,565					0.59		5.90	7.08	2.95	7.67	7.08	35.39	53.67	66.05	27.72	15.33	5.90		
103	Kano	Kano Mun.	402,919							0.99	0.25		5.21	1.99	2.48			2.98				
104	Kano	Karaye	155,873			1.28	1.28			7.70	14.11	7.06		12.19	18.60							
105	Kano	Kibiya	150,724							1.99	37.15	39.61	4.64			5.97			1.99			
106	Kano	Kiru	291,869		0.34	0.34	3.08	7.54	3.77	1.03	3.77				0.69	0.69		4.11	2.06			
107	Kano	Kumbotso	326,259							0.31	0.92	0.92	7.05	3.68	4.90	4.29	14.41	4.29	3.07	3.07		
108	Kano	Kunchi	122,375				0.82			7.35	7.35	17.10	10.62	8.17	0.82		2.45	2.45		0.82		
109	Kano	Kura	159,394				2.51				3.14	6.90	0.63		3.14			7.53				
110	Kano	Madobi	150,600		1.33			0.66	2.66	2.66	3.32		5.31	5.31	11.95	32.54	27.22	98.94	3.98	3.98		
111	Kano	Makoda	245,151							5.71	11.01	17.95	15.99				19.58	5.30				
112	Kano	Minjibir	235,666	0.85	0.85				1.70	0.85		9.34	13.15	5.94	3.39		5.94	19.09				
113	Kano	Nassarawa	657,710					0.15					6.08	2.89	6.54	2.13	1.22	6.04	1.98	1.22		
114	Kano	Rano	160,318								1.87		3.74			63.62	52.40					
115	Kano	Rimin Gado	115,510					3.46	3.46	2.60	0.87			4.33	1.73	38.99	2.60	25.97	4.33	4.33		
116	Kano	Rogo	251,041			0.80			2.39	1.99						1.20	1.59	7.17	5.18			
117	Kano	Shanono	154,992							2.58	0.65	5.81	0.65		4.52	25.16	7.74	8.39	5.16	11.61		
118	Kano	Sumaila	279,611													3.58		6.44				
119	Kano	TAWada	255,450						0.78	3.91	3.13	6.65	9.00	12.14	16.83			8.61	2.74			
120	Kano	Takai	223,484			0.45		0.45								7.16	8.50	9.40				
121	Kano	Tarauni	244,013							0.82	2.87	3.28	2.46	1.64	1.64		13.52	25.82		7.79		
122	Kano	Tofa	107,732	7.43	7.43	5.57	3.71	12.07	31.56	21.85	27.85	7.43	21.35	21.35	3.71		43.63	58.48	24.13	13.92		
123	Kano	Tsanyawa	173,811				2.30		1.15	2.30	13.23	9.78	6.90			10.36	7.48	38.55	6.33	6.33		
124	Kano	Ungogo	407,474							0.25	0.49	0.74	2.21	3.19	7.61	2.45	5.89	8.34	3.19	2.70		
125	Kano	Warawa	141,962							0.70	4.93	9.16		1.41	3.52	0.70	14.79	29.59		15.50		
126	Kano	Wudil	204,134				0.49	0.49	2.94	6.37	6.37		3.43	7.35		20.08	28.41	11.76	3.43	4.90		
127	Katsina	Bakon	163,222					3.06	3.06	1.23	30.63				51.46	53.91	23.89	30.63	53.30	99.86		
128	Katsina	Batagarawa	201,690		0.50			0.50	0.99	1.98	11.40	18.84	23.60	19.63	13.39			27.77	36.19	18.84		
129	Katsina	Batsari	228,356						6.13	2.19	3.07	31.53	8.76	7.44	6.13	17.95	16.20					
130	Katsina	Baure	215,732							2.78	6.49				0.46	8.81	11.12					
131	Katsina	Bindawa	166,484					1.80		9.61	51.06	25.83	28.43	39.04	52.86	26.43	26.43	4.81	1.80			
132	Katsina	Charanchi	150,373					1.33	3.33						43.23	39.90	34.58	47.22	28.60	31.26		
133	Katsina	Dandume	159,253							1.26		4.40	9.42	11.30	3.77	21.35	69.07	12.56	6.91			
134	Katsina	Danja	137,359							10.92	13.10	26.21	64.79	68.43	90.27	129.59	95.37	87.36	11.65	74.26	30.58	17.47
135	Katsina	Danmusa	124,233		3.22			8.05	16.10	2.41	1.61	8.85	11.27	19.32	20.93	4.02	25.76			8.05		
136	Katsina	Daura	240,095				2.08		0.83	2.08		2.92	1.67	9.58	3.75	5.41	7.50					
137	Katsina	Dutsi	131,152			1.52		1.52				0.76	9.91	9.15		2.29	2.29					
138	Katsina	Dutsinma	185,404					1.08		1.08	3.24	4.85	16.72	31.28	11.87		21.04	32.36	11.87	10.79		
139	Katsina	Faskari	214,213						1.87	3.73	0.93	4.20	12.14	10.74	17.74	43.41	25.21	50.42				
140	Katsina	Funtua	246,488							2.84		6.09	1.22	11.77	6.49	13.79	36.92	44.22	43.41	23.53		
141	Katsina	Ingawa	185,494								11.88	16.17	23.18	19.41	16.24	28.03	9.70	10.34	7.01			
142	Katsina	Jibya	185,488							14.56	5.93	17.70			1.08	5.93				1.62		

**Situation Épidémiologique de la méningite du Nigeria 2009/ (3/3)**  
**Meningitis epidemiological situation 2009**

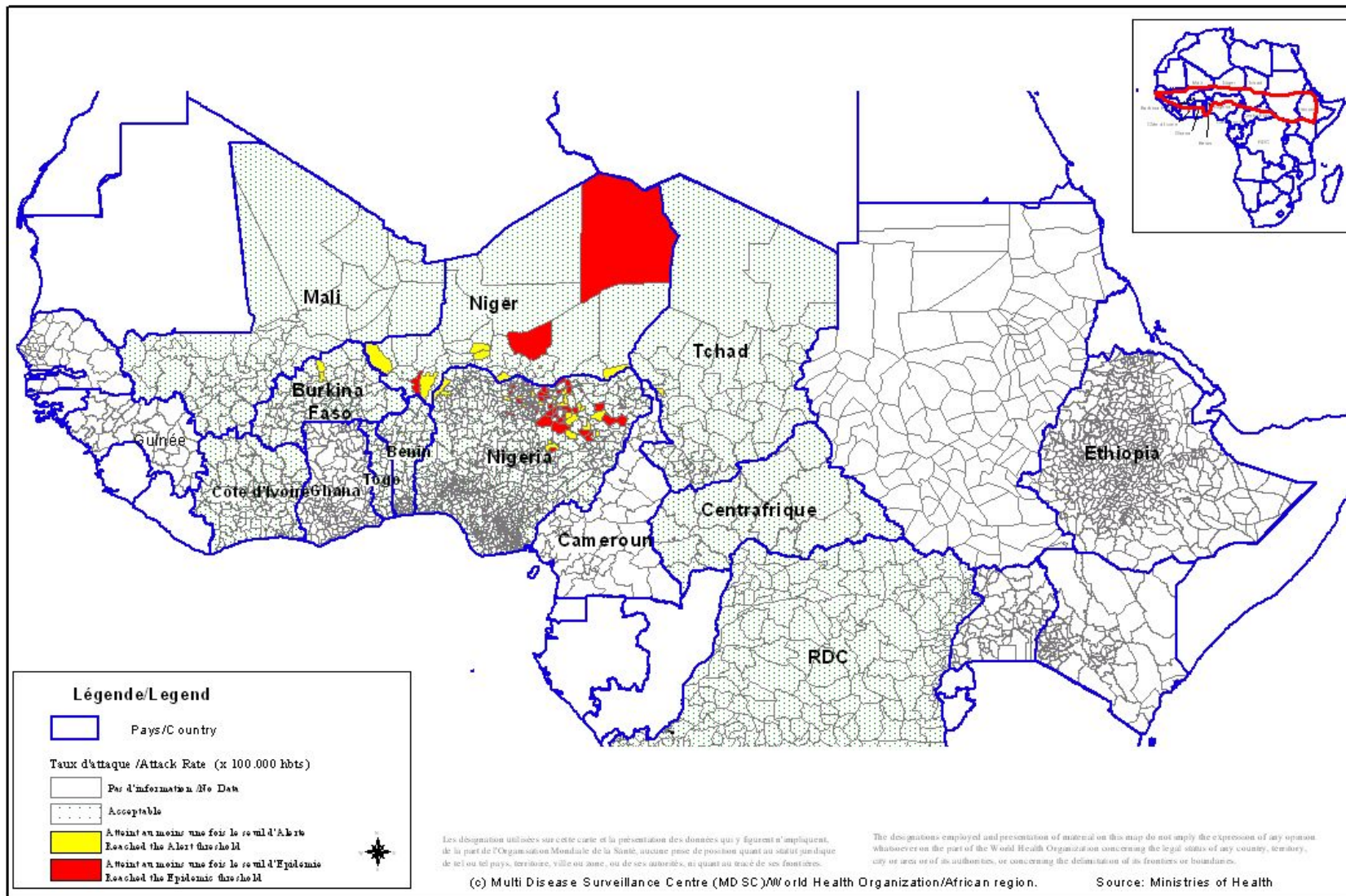
SN	State	LGA	Population	Wk 01 Attack Rate	Wk 02 Attack Rate	Wk 03 Attack Rate	Wk 04 Attack Rate	Wk 05 Attack Rate	Wk 06 Attack Rate	Wk 07 Attack Rate	Wk 08 Attack Rate	Wk 09 Attack Rate	Wk 10 Attack Rate	Wk 11 Attack Rate	Wk 12 Attack Rate	Wk 13 Attack Rate	Wk 14 Attack Rate	Wk 15 Attack Rate	Wk 16 Attack Rate	Wk 17 Attack Rate
143	Katsina	Kafur	221,697			0.45	5.66	7.22	4.96	0.45	8.57	18.69	7.67	9.47	18.49	36.90	3.61	60.80		0.45
144	Katsina	Kaita	201,500			1.99			4.47	11.43		48.04	39.21	36.72	22.83	28.29	19.35	27.79	9.43	4.96
145	Katsina	Kankara	268,526		0.37					5.21	2.23	14.52	41.84	13.78	29.05	20.85	9.31	23.09	3.72	2.23
146	Katsina	Kankia	165,476	0.60		0.60	1.81	3.63	5.44	30.22	9.67	22.96	12.69	54.99	18.73	69.50	16.92	32.63	18.73	
147	Katsina	Katsina	347,989					2.01	2.30	0.86	7.76	4.60	12.93	11.21	20.69	33.05	36.78	43.39		
148	Katsina	Kurfi	128,484		5.45	2.33	10.12	3.89	19.46	35.66		21.79			6.23	1.56		8.56	4.67	
149	Katsina	Kusada	108,472					11.99	17.52	6.30	3.69	18.44		9.22	56.24	56.24	32.27	6.45		
150	Katsina	Maiaduwu	219,833		1.36	3.64					2.27	3.64		5.46	7.28	15.47	5.91	14.10		
151	Katsina	Malunfashi	199,882	1.50				7.50	13.01	18.01	29.02	23.01		53.03	56.03	48.53		61.04		
152	Katsina	Mani	193,376							7.24	3.10	2.07			3.10		12.93		4.65	
153	Katsina	Mashi	189,188					3.17			1.59			7.93		6.34	13.74	8.99	7.93	3.70
154	Katsina	Matazu	126,019			1.59	6.35		5.55	12.76		15.87	3.97	24.00		68.24	49.99	32.53		
155	Katsina	Musawa	187,637			3.20	4.80	1.60	21.32	18.65		51.16		27.18	62.35	33.04	17.05	9.59	10.13	
156	Katsina	Rimi	168,000						4.76	8.33	8.33	4.76	8.33	33.93	57.14	52.38	51.79	38.69	19.64	20.24
157	Katsina	Sabuwu	148,666										0.67	16.14	14.80	18.16				
158	Katsina	Safana	200,820			2.99	2.99	1.49		1.00	1.49	1.99	5.98	3.49	29.38	15.44	22.91	17.43	7.97	13.44
159	Katsina	Sandamu	150,017	1.33	2.67	7.33	10.00	10.66				35.33	22.66		5.33	3.33				
160	Katsina	Zango	169,092								9.46	20.11		24.84	3.55					
161	Kebbi	Aliero	72,301								4.15	11.06								
162	Kebbi	Arewa	201,681										1.49	2.97	2.48	0.99	1.49	0.99	5.45	
163	Kebbi	Birnin Kebbi	294,165										2.04	0.34	4.76	2.72	1.36		5.10	
164	Kebbi	Bunza	133,111							4.51		12.77	11.27		6.76	5.26	0.75			
165	Kebbi	Dandi	158,111							2.53							8.22	4.43	2.53	
166	Kebbi	Kalgo	93,594										3.21		8.55	3.21				
167	Kebbi	Koko Bese	169,434												2.36			5.31		
168	Kebbi	Maiyama	192,537								0.52				3.64		6.23	1.56	4.67	1.04
169	Kebbi	Suru	164,639												9.11					
170	Nasarawa	NEggon	162,957									6.14	0.61							
171	Niger	Magama	200,819			1.00	1.00	0.50	2.99		3.98		3.98	4.48	3.49	2.49	5.48			
172	Niger	Mariga	220,471								1.36	1.81	1.81		1.81	1.81	5.44			
173	Plateau	Bokkos	193,303	0.52				0.52	0.52	0.52	5.17						2.07	0.52	1.03	
174	Plateau	Langtang North	152,345			0.66								14.44	3.28		1.97	0.66	1.97	0.66
175	Sokoto	Binji	114,766							6.97	1.74		1.74	13.94	2.61	3.49	0.87		3.49	
176	Sokoto	Gudu	104,404										4.79		24.90	8.70	2.87		27.76	
177	Sokoto	Gwadabawa	252,811					9.10	14.64	7.52	30.46	4.75	5.54	2.37	4.35				0.79	0.79
178	Sokoto	Illela	164,443							24.93	6.69	14.59	4.26	9.12	2.43				12.16	
179	Sokoto	Isa	159,651							36.98		3.76					1.88			
180	Sokoto	Kebbe	136,217												27.16	4.40	5.14	3.67		
181	Sokoto	Kware	146,315						1.37		2.05					5.47		4.10	6.15	
182	Sokoto	Sabon Birni	226,849													5.29	6.61			
183	Sokoto	Tambuwal	245,788							5.70	3.25		6.10							
184	Sokoto	Tangaza	124,410								1.61						19.29		11.25	
185	Sokoto	Tureta	74,710								2.68	4.02				24.09	24.09			
186	Sokoto	Wamako	198,275											7.13	10.70	1.53				
187	Taraba	K/Lamido	213,381							0.47	7.50	7.97	3.75	7.50	9.37	4.22	1.41	0.94		
188	Yobe	Bade	154,979					1.29				1.29	3.87	4.52	2.58	3.87	11.61	11.61	10.97	
189	Yobe	Bursari	120,988								16.53	4.13	8.27	2.48	2.48	4.96	12.40	1.65	3.31	
190	Yobe	Damaturu	97,583					1.02	8.20	8.20	18.46	12.80	14.36	12.30	29.72	27.67	27.67	15.37	11.27	
191	Yobe	Fika	151,778					6.59	9.88	5.93	2.64	1.98	1.98	9.22	7.25	6.59	1.32	2.64		
192	Yobe	Fune	333,458					5.40	0.60	2.40	0.90		6.00	3.60	4.20	3.90	3.90	3.90	1.80	
193	Yobe	Gujba	144,231					2.08	9.71	15.25	15.25	22.88	15.25	15.25	33.28	42.29	29.81	20.80	6.93	
194	Yobe	Gulani	114,763					15.68	42.70	6.97	18.30	8.71	6.10	3.49	6.10	4.36	12.30	3.49		
195	Yobe	Jakusko	253,988						1.97	2.76	1.57	0.39	4.33	18.11	5.12	2.36	7.87	5.91		
196	Yobe	Karasuwa	118,624										20.23	25.28	4.22	5.06		3.37		
197	Yobe	Machina	68,304				1.46		1.46	1.46	5.86	23.42	7.32	5.86		11.71	5.86	10.25	2.93	10.25
198	Yobe	Nangere	97,371					5.14	1.03	3.08	3.08	14.38		2.05	14.38	26.70	17.46	1.03	5.14	
199	Yobe	Nguru	167,008		1.20	3.59			1.80	4.19	3.59	2.40	3.59	3.59	12.57	23.95	23.35	18.56	11.99	23.95
200	Yobe	Potiskum	228,258							6.13	6.57	11.83	4.38	2.63	9.64	9.20	17.52	14.46	8.32	5.26
201	Yobe	Tarmuwa	85,597										2.34		3.50	3.50	5.84	4.67		
202	Yobe	Yunusari	139,500												0.72			14.34	4.30	
203	Zamfara	Anka	158,381								10.23	1.28		6.39	7.03	17.27				
204	Zamfara	Bakura	205,428												15.09					
205	Zamfara	Bukkuyum	232,607			0.43	1.72	1.29	2.58	1.29	9.03	0.86	0.43	19.76						
206	Zamfara	Bungudu	283,478			1.41	3.53	3.53	7.06	7.06	7.06	7.06	3.53	7.41	8.11	7.06	6.35	2.12		0.35
207	Zamfara	Gummi	224,810			2.22	0.44		3.11	2.67			0.44	2.67			24.02			
208	Zamfara	Maradun	231,748														8.20			
209	Zamfara	Maru	320,829	0.94			3.12		3.12	6.23	5.92	3.12	10.91	14.96	4.99	9.97	5.30	2.18		
210	Zamfara	Shinkafi	149,092	0.67	1.34				7.38	10.06		1.34	6.71	14.76			20.12	4.70	4.02	
211	Zamfara	Talata Mafara	236,503										5.07	0.42	0.42					
212	Zamfara	Tsafe	292,371				1.03						2.39	0.68	1.37	2.39	2.39	8.21		

■ LGAs in Alert: (5.00 ≤ AR < 10.00)

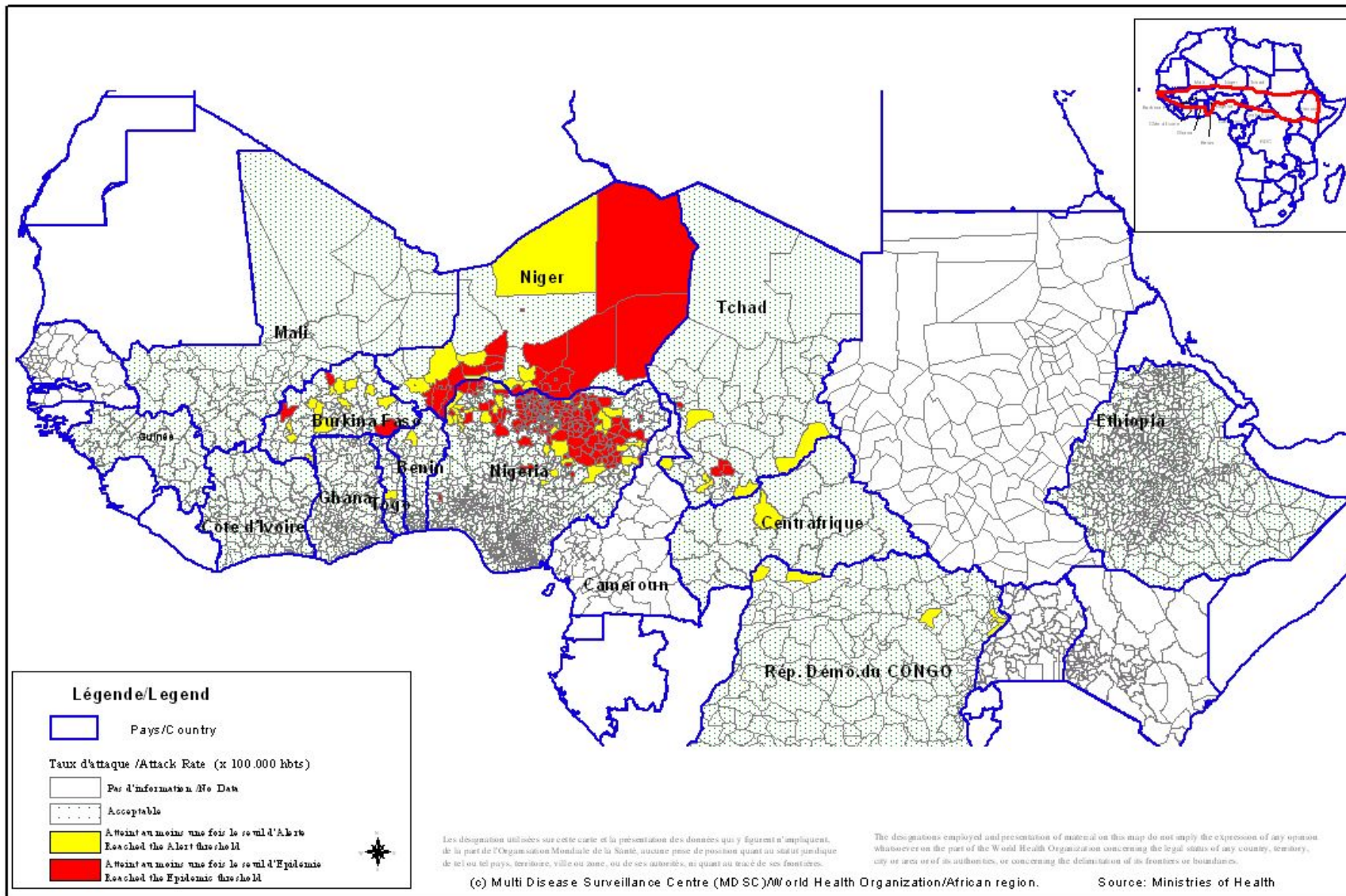
■ LGAs in Epidemic: (AR ≥ 10.00)

### III. REPRESENTATION GRAPHIQUE DES DONNEES/ GRAPHICAL REPRESENTATION OF DATA

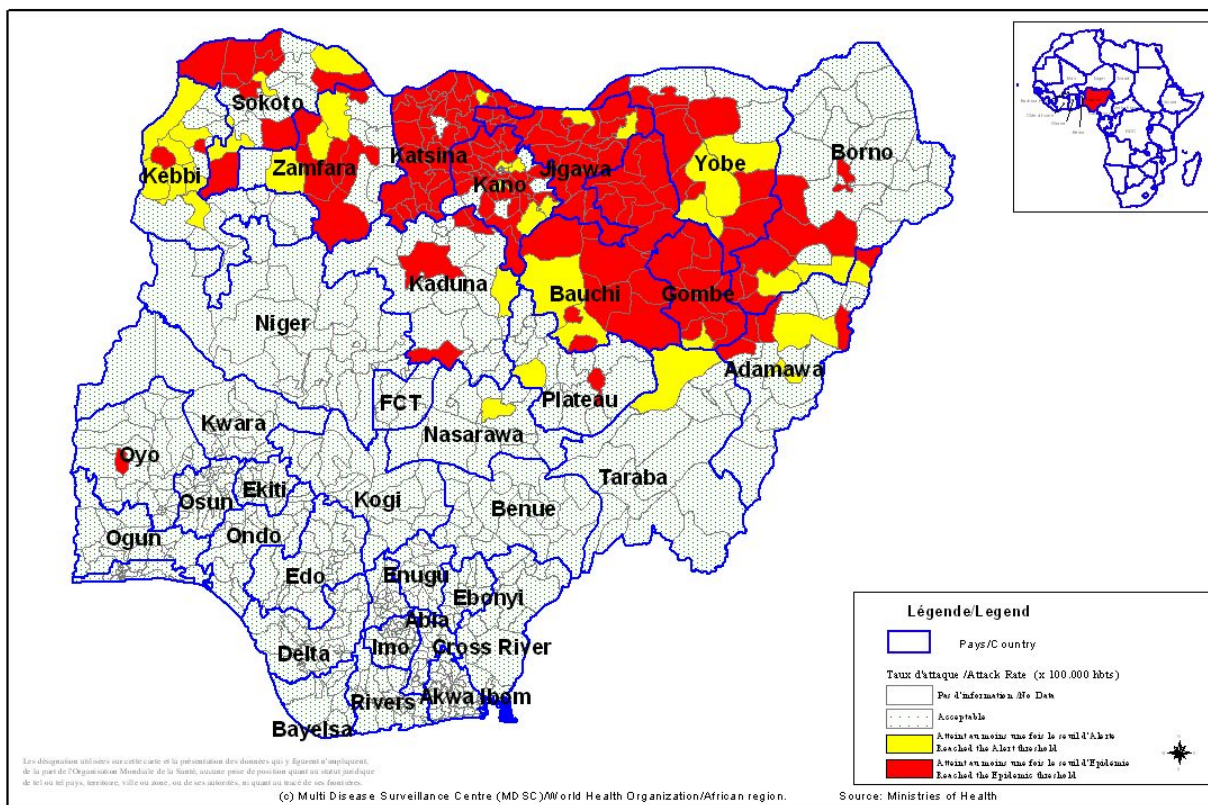
**Figure 1: Cartographie des taux d'attaque de la Méningite par district par pays de la semaine 17, 2009**  
*Map of meningitis attack rates by district by country at week 17, 2009*



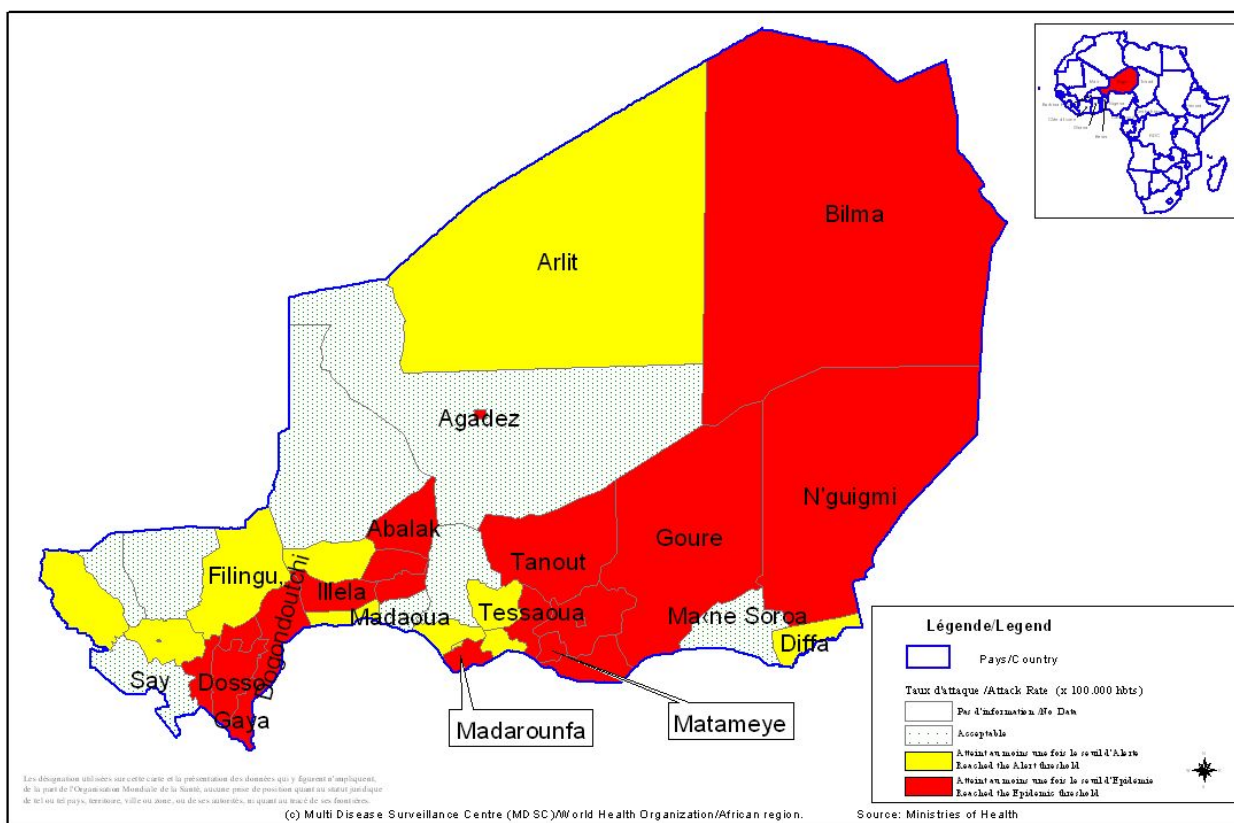
**Figure 2 : Cartographie récapitulative des taux d'attaque cumulés de la Méningite, Semaine 01 – 17, 2009**  
 (Représentation basée sur les taux d'attaque hebdomadaires les plus élevés par district au cours de l'année)  
*Recapitulative map of cumulative Meningitis attack rates at week 1- 17, 2009*  
 (Mapping based on weekly highest attack rates by district during the year)



**Figure 3. Taux d'attaque cumulés de la Méningite du Nigeria, Semaine 1 – 17, 2009**  
*Cumulative Meningitis attack rates of Nigeria at week 1 - 17, 2009*



**Figure 4. Taux d'attaque cumulés de la Méningite du Niger, Semaine 1 – 17, 2009**  
*Cumulative Meningitis attack rates of Niger at week 1 - 17, 2009*





IV. Courbes de tendance sur les deux dernières années/  
Epidemiological trends during two consecutive years

**Figure 3 : Evolution hebdomadaire comparative par pays des années 2008 et 2009/**  
(Uniquement les pays ayant transmis des données pour la semaine en cours)  
**Comparative weekly evolution by country, years 2008-2009**  
(Only countries which transmitted data during the current week)

